

VOR/DME STW 109.6 Chan 33	APP CRS 267°	Rwy Idg TDZE Apt Elev 2877 371 372
---	------------------------	--

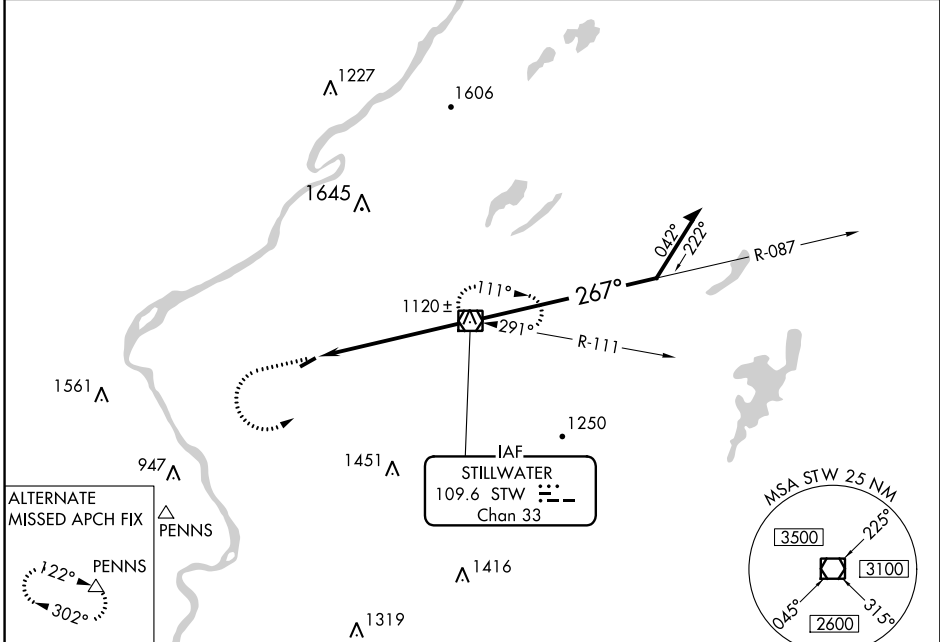
VOR RWY 25

BLAIRSTOWN (1N7)

NA When local altimeter setting not received, use Lehigh Valley altimeter setting. Procedure NA at night.
NA Helicopter visibility reduction below 1 SM NA.

MISSED APPROACH: Climbing left turn to 3000 direct STW VOR/DME and hold.

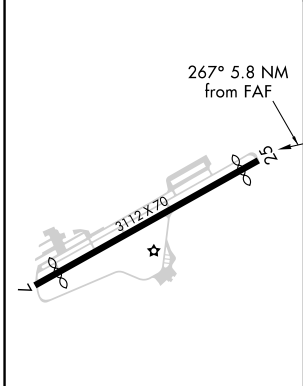
NEW YORK APP CON 127.6 379.9	UNICOM 123.0 (CTAF) 0
--	---------------------------------



ALTERNATE MISSED APCH FIX



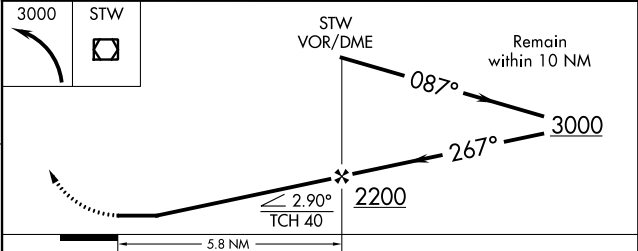
ELEV 372	TDZE 371
----------	----------



MIRL Rwy 7-25

FAF to MAP 5.8 NM

Knots	60	90	120	150	180
Min:Sec	5:48	3:52	2:54	2:19	1:56



CATEGORY	A	B	C	D
S-25	1320-1¼	949 (1000-1¼)		NA
CIRCLING	1320-1¼	948 (1000-1¼)		NA
LEHIGH VALLEY ALTIMETER SETTING MINIMUMS				
S-25	1600-1¼ 1229 (1300-1¼)	1600-1½ 1229 (1300-1½)		NA
CIRCLING	1600-1¼ 1228 (1300-1¼)	1600-1½ 1228 (1300-1½)		NA

NE-2, 18 JUL 2019 to 15 AUG 2019

NE-2, 18 JUL 2019 to 15 AUG 2019