

APP CRS 074°	Rwy Idg TDZE Apt Elev	2794 372 372
------------------------	-----------------------------	---

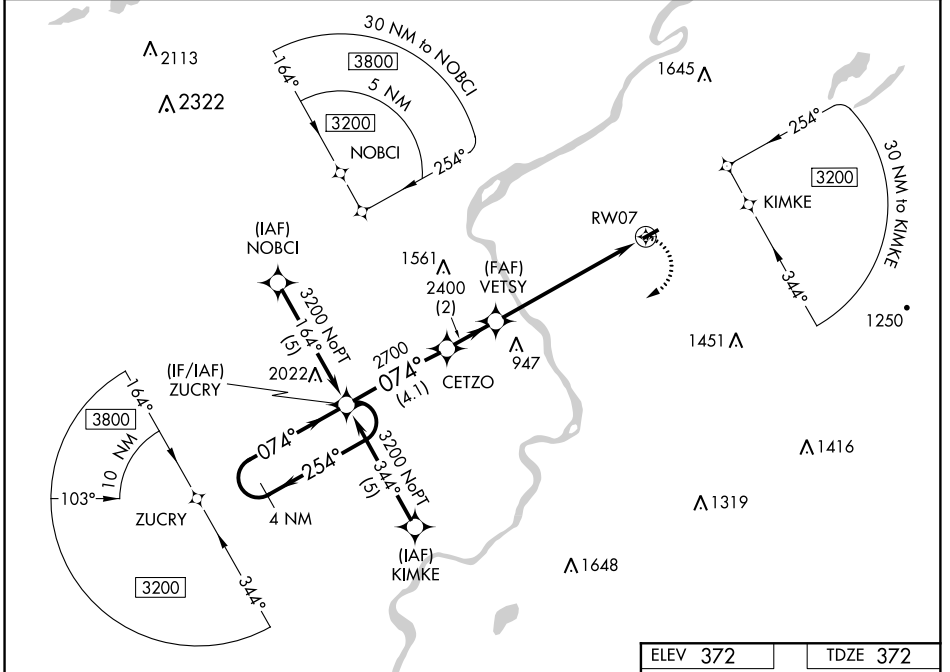
RNAV (GPS) RWY 7

BLAIRSTOWN (1N7)

⚠ When local altimeter setting not received, use Lehigh Valley altimeter setting. DME/DME RNP-0.3 NA. Procedure NA at night. Helicopter visibility reduction below 1 SM NA.

⚠ NA MISSED APPROACH: Climbing right turn to 3200 direct ZUCRY and hold.

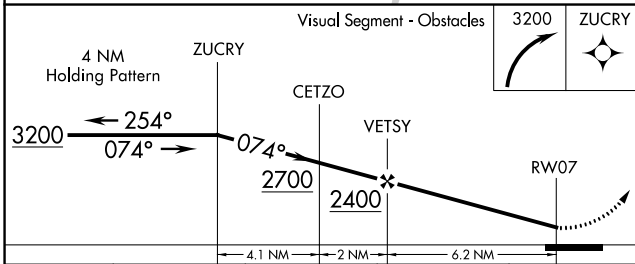
NEW YORK APP CON 127.6 379.9	UNICOM 123.0 (CTAF) 0
--	---------------------------------



NE-2, 18 JUL 2019 to 15 AUG 2019

NE-2, 18 JUL 2019 to 15 AUG 2019

ELEV 372	TDZE 372
----------	----------



CATEGORY	A	B	C	D
LNVA MDA	1140-1 768 (800-1)	1140-1¼ 768 (800-1¼)		NA
CIRCLING	1220-1 848 (900-1)	1280-1¼ 908 (1000-1¼)		NA
LEHIGH VALLEY ALTIMETER SETTING MINIMUMS				
LNVA MDA	1420-1¼ 1048 (1100-1¼)	1420-1½ 1048 (1100-1½)		NA
CIRCLING	1500-1¼ 1128 (1200-1¼)	1560-1½ 1188 (1200-1½)		NA

