

| | | |
|------------------------|-----------------------------|---|
| APP CRS 254° | Rwy Idg TDZE Apt Elev | 2877 371 372 |
|------------------------|-----------------------------|---|

RNAV (GPS) RWY 25

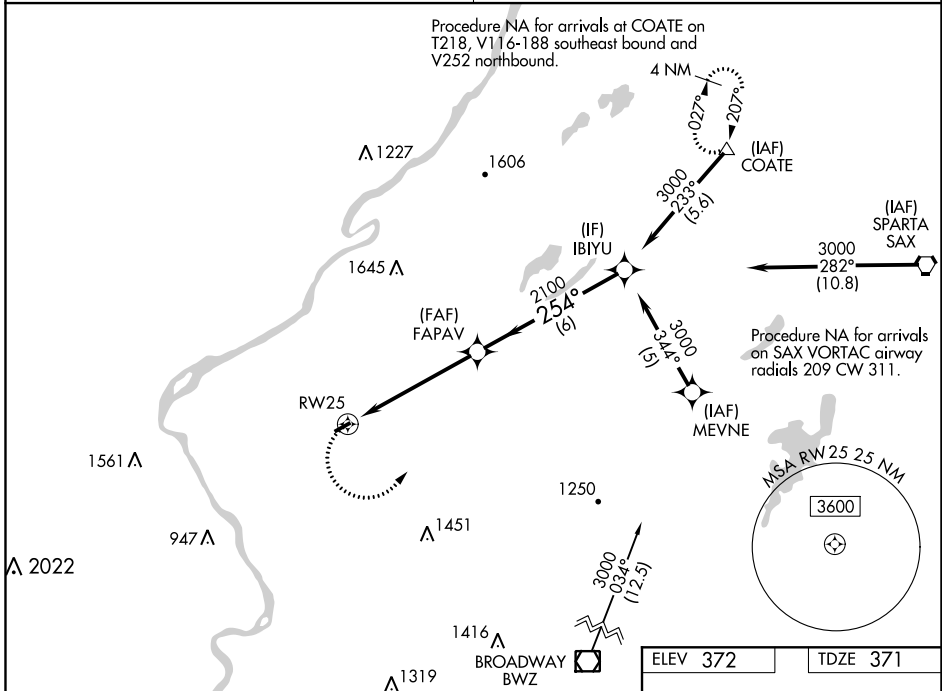
BLAIRSTOWN (1N7)

NA DME/DME RNP-0.3 NA. Procedure NA at night. Obtain local altimeter setting on CTAF; when not received, use Lehigh Valley Intl altimeter setting. Helicopter visibility reduction below 1 SM NA.

MISSED APPROACH: Climbing left turn to 3000 direct COATE and hold. When authorized by ATC, continue climb-in-hold to 4000.

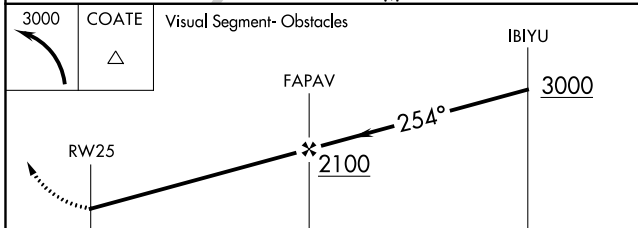
NEW YORK APP CON
127.6 379.9

UNICOM
123.0 (CTAF) 0



NE-2, 18 JUL 2019 to 15 AUG 2019

NE-2, 18 JUL 2019 to 15 AUG 2019



| CATEGORY | A | B | C | D |
|---|---------------------------|---------------------------|---|----|
| LEHIGH VALLEY INTL ALTIMETER SETTING MINIMUMS | | | | |
| LNVA MDA | 1260-1¼ | 889 (900-1¼) | | NA |
| CIRCLING | 1260-1¼ 888 (900-1¼) | 1300-1¼ 928 (1000-1¼) | | NA |
| LNVA MDA | 1540-1¼ | 1540-1½ | | NA |
| CIRCLING | 1540-1¼ 1168 (1200-1¼) | 1600-1½ 1228 (1300-1½) | | NA |

ELEV 372 TDZE 371

