

APP CRS 178°	Rwy Idg 4807
	TDZE 779
	Apt Elev 779

RNAV (GPS) RWY 18

MARSHALL MEMORIAL MUNI (MHL)

RNP APCH.

▼ Rwy 18 helicopter visibility reduction below 3/4 SM NA. VDP NA when using Sedalia altimeter setting. Circling Rws 9 and 27 NA. When local altimeter setting not received, use Sedalia altimeter setting and increase all MDAs 80 feet.

MISSED APPROACH: Climb to 3000 direct GOCOL and hold.

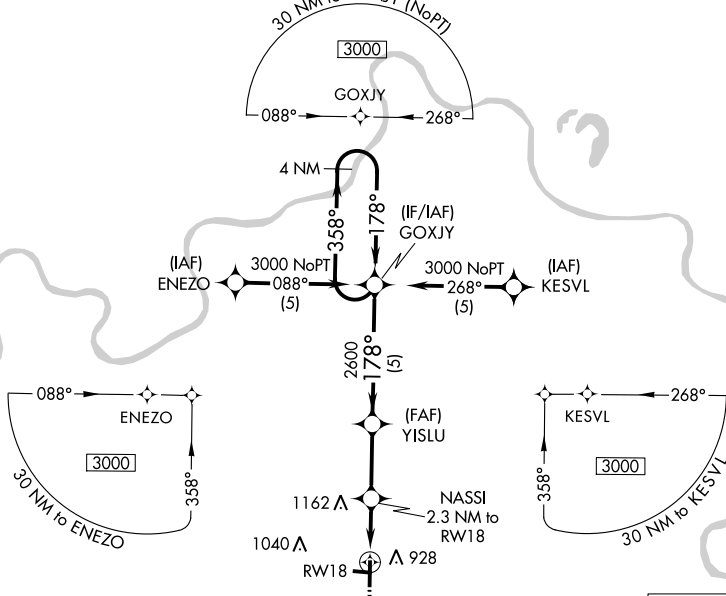
AWOS-3 118.675

WHITEMAN APP CON * 127.45

UNICOM 122.8 (CTAF) 1

NC-3: 18 JUL 2019 to 15 AUG 2019

NC-3: 18 JUL 2019 to 15 AUG 2019



ELEV 779	TDZE 779
----------	----------

Profile view diagram showing vertical clearance over RWY 18 and RWY 27. Key features include:

- RWY 18:** 178° heading, 81' clearance.
- RWY 27:** 3320 X 150, 1.0% UP slope, 27' clearance.
- Obstacles:** 5006 X 75, 36' clearance.

REIL Rwy 36 **1**
MIRL Rwy 18-36 **1**

3000	GOCOL	Visual Segment - Obstacles.	4 NM Holding Pattern
	NASSI 2.3 NM to RWY 18	YISLU	GOXJY
	1.7 NM to RWY 18	1620	2600
	-1.7 NM	0.6	2.7 NM
			5 NM
CATEGORY	A	B	C
LNAV MDA	1360-1	581 (600-1)	NA
CIRCLING	1360-1	581 (600-1)	NA