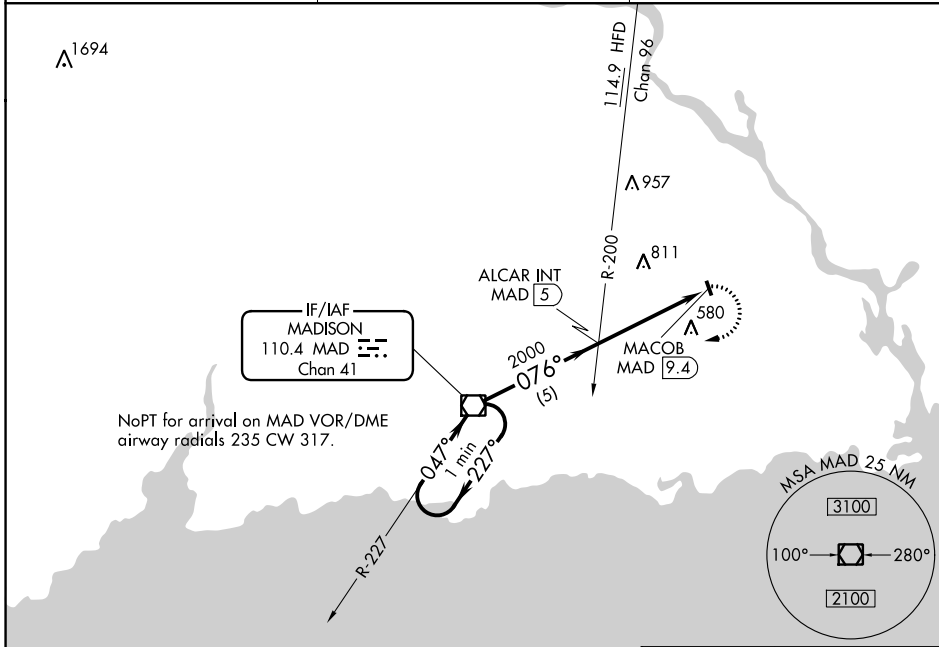


VOR/DME MAD 110.4 Chan 41	APP CRS 076°	Rwy Idg TDZE Apt Elev	N/A N/A 416
---	------------------------	-----------------------------	--

VOR-A
CHESTER(SNC)

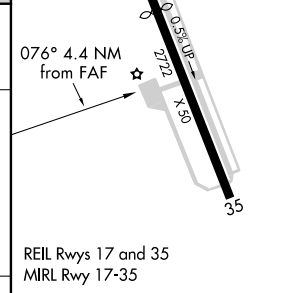
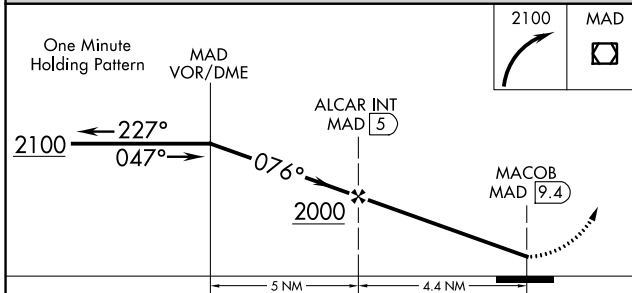
<p>▼ Procedure NA at night. Helicopter visibility reduction below 1 SM NA. ▲ When local altimeter setting not received, use Meriden altimeter setting and increase all MDA 100 feet.</p>	<p>MISSED APPROACH: Climbing right turn to 2100 direct MAD VOR/DME and hold.</p>
--	--

AWOS-3 118.325	NEW YORK APP CON 124.075 343.65	UNICOM 122.725 (CTAF)
--------------------------	---	---------------------------------



NE-1, 18 JUL 2019 to 15 AUG 2019

NE-1, 18 JUL 2019 to 15 AUG 2019



CATEGORY	A	B	C	D	FAF to MAP 4.4 NM					
CIRCLING	960-1	544 (600-1)		NA	Knots	60	90	120	150	180
					Min:Sec	4:24	2:56	2:12	1:46	1:28