

APP CRS 354°	Rwy Idg 2722
	TDZE 416
	Apt Elev 416

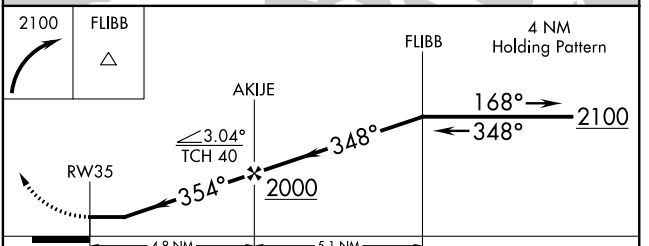
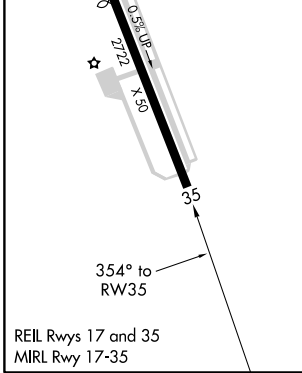
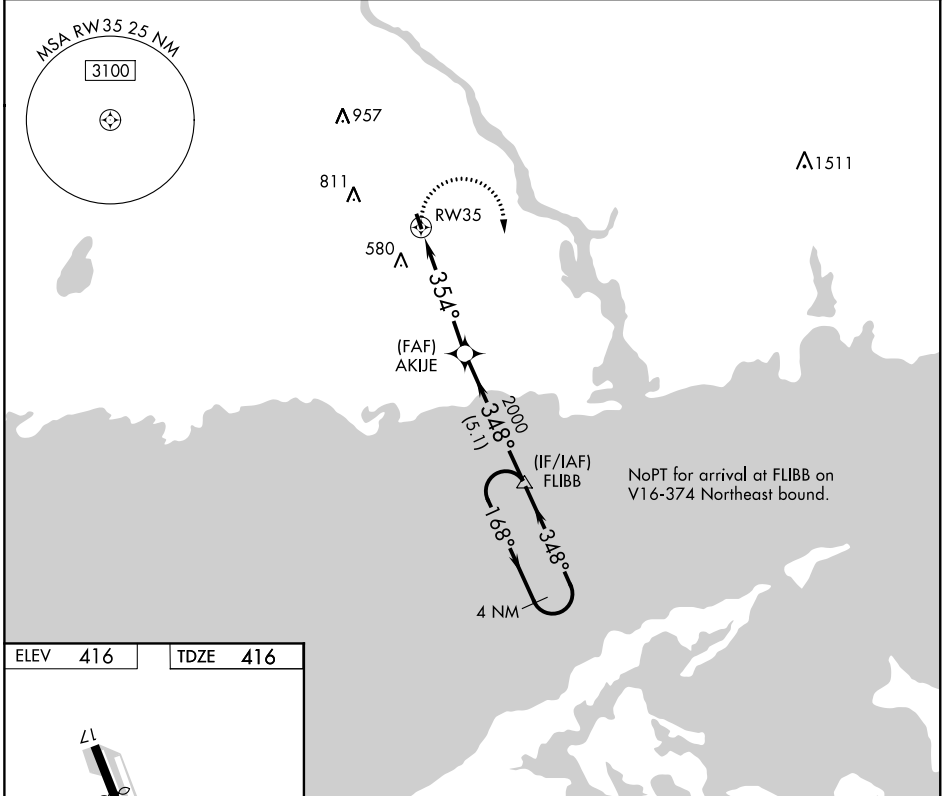
RNAV (GPS) RWY 35

CHESTER (SNC)

⚠ DME/DME RNP-0.3 NA. Procedure NA at night. Helicopter visibility reduction below 1 SM NA. When local altimeter setting not received, use Meriden altimeter setting and increase all MDA 100 feet.

⚠ MISSED APPROACH: Climbing right turn to 2100 direct FLIBB and hold.

AWOS-3 118.325	NEW YORK APP CON 124.075 343.65	UNICOM 122.725 (CTAF)
--------------------------	---	---------------------------------



CATEGORY	A	B	C	D
LNAV MDA	820-1	404 (500-1)	NA	
CIRCLING	920-1	504 (600-1)	NA	

NE-1, 18 JUL 2019 to 15 AUG 2019

NE-1, 18 JUL 2019 to 15 AUG 2019