

WAAS CH <b>86826</b> <b>W05A</b>	APP CRS <b>052°</b>	Rwy Idg TDZE Apt Elev	<b>6202</b> <b>577</b> <b>577</b>
--	------------------------	-----------------------------	---

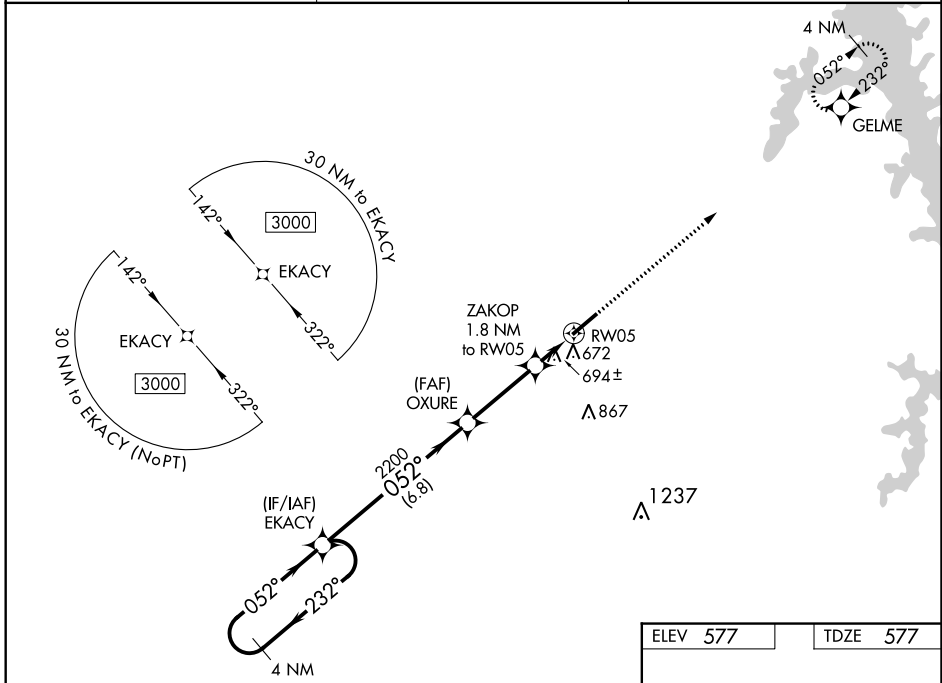
# RNAV (GPS) RWY 5

KYLE-OAKLEY FIELD (CEY)

**⚠** When local altimeter setting not received use Mayfield altimeter setting: increase all DA/MDA 40 feet, and increase LPV, LNAV/VNAV all Cats, and LNAV Cats C and D visibility  $\frac{1}{8}$  mile. For uncompensated Baro-VNAV systems, LNAV/VNAV NA below -16°C (4°F) or above 54°C (130°F). DME/DME RNP-0.3 NA. Helicopter visibility reduction below  $\frac{3}{4}$  SM NA. VDP and Baro-VNAV NA when using Mayfield altimeter setting.

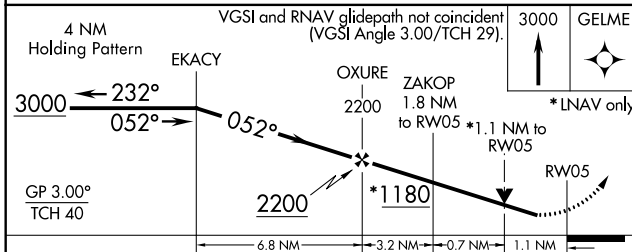
**MISSED APPROACH:** Climb to 3000 direct GELME and hold.

AWOS-3 <b>119.975</b>	MEMPHIS CENTER <b>133.65 292.15</b>	UNICOM <b>122.7 (CTAF) 0</b>
--------------------------	--	---------------------------------



SE-1, 18 JUL 2019 to 15 AUG 2019

SE-1, 18 JUL 2019 to 15 AUG 2019



ELEV 577	TDZE 577
----------	----------

CATEGORY	A	B	C	D
LPV DA		827- $\frac{7}{8}$	250 (300- $\frac{7}{8}$ )	
LNAV/VNAV DA		871-1	294 (300-1)	
LNAV MDA	960-1	383 (400-1)	960-1 $\frac{1}{8}$	383 (400-1 $\frac{1}{8}$ )
<b>C</b> CIRCLING	1000-1 423 (500-1)	1040-1 463 (500-1)	1040-1 $\frac{1}{2}$ 463 (500-1 $\frac{1}{2}$ )	1180-2 603 (700-2)

