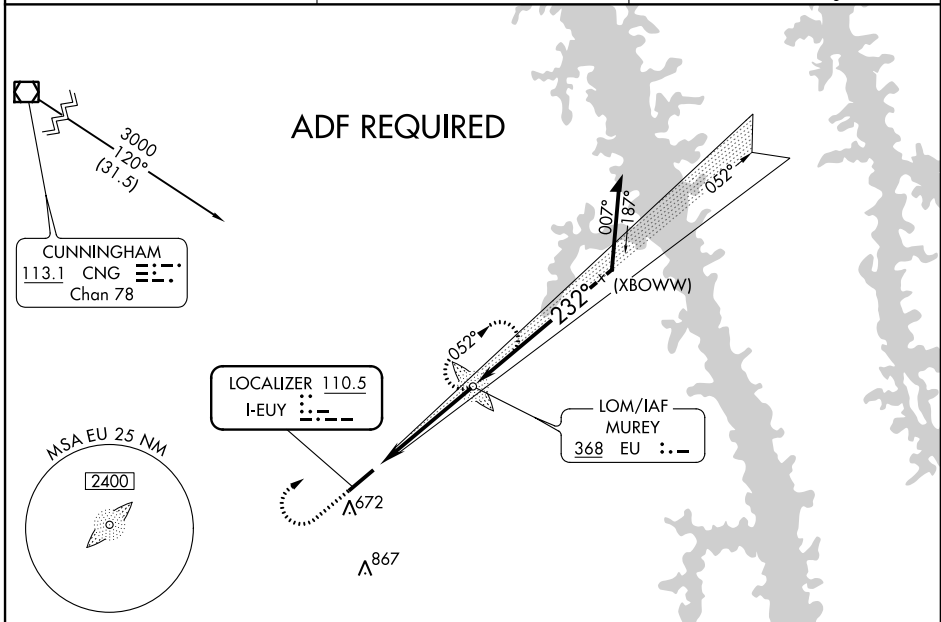


LOC I-EUY <b>110.5</b>	APP CRS <b>232°</b>	Rwy Idg TDZE Apt Elev	<b>6202</b> <b>568</b> <b>577</b>
---------------------------	------------------------	-----------------------------	---

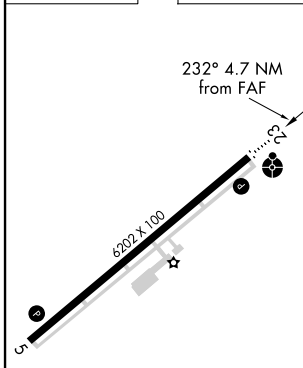
**LOC RWY 23**  
KYLE-OAKLEY FIELD (CEY)

<p><b>NA</b> Rwy 23 helicopter visibility reduction below 3/4 SM NA. ADF required. When local altimeter setting not received use Mayfield altimeter setting: increase all MDA 40 feet and increase S-23 Cats C and D visibility 1/8 mile. For inop ODALS, increase S-23 Cats C and D visibility 1/4 mile.</p>	<p><b>ODALS</b></p>	<p><b>MISSED APPROACH:</b> Climb to 1200 then climbing right turn to 2100 direct MUREY LOM and hold.</p>
---	---------------------	--

AWOS-3 <b>119.975</b>	MEMPHIS CENTER <b>133.65 292.15</b>	UNICOM <b>122.7 (CTAF) 0</b>
--------------------------	--	---------------------------------



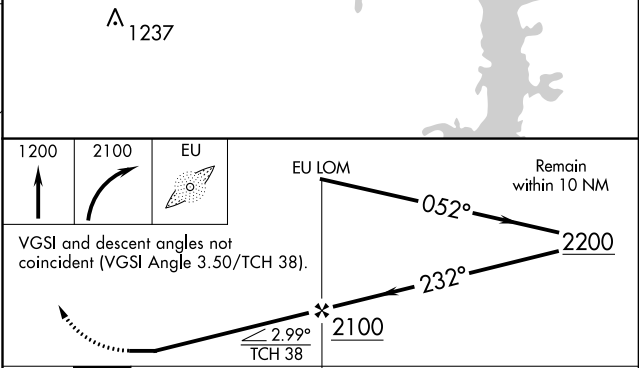
ELEV 577	TDZE 568
----------	----------



REIL Rwy 5 and 23  
MIRL Rwy 5-23

FAF to MAP 4.7 NM

Knots	60	90	120	150	180
Min:Sec	4:42	3:08	2:21	1:53	1:34



CATEGORY	A	B	C	D
S-23	980-3/4	412 (500-3/4)	980-1	412 (500-1)
CIRCLING	1000-1 423 (500-1)	1040-1 463 (500-1)	1040-1 1/2 463 (500-1 1/2)	1140-2 563 (600-2)

SE-1, 18 JUL 2019 to 15 AUG 2019

SE-1, 18 JUL 2019 to 15 AUG 2019