

APP CRS	Rwy Idg	<b>4032</b>
<b>066°</b>	TDZE	<b>775</b>
	Apt Elev	<b>775</b>

# RNAV (GPS) RWY 7

PAUL C MILLER - SPARTA (8D4)

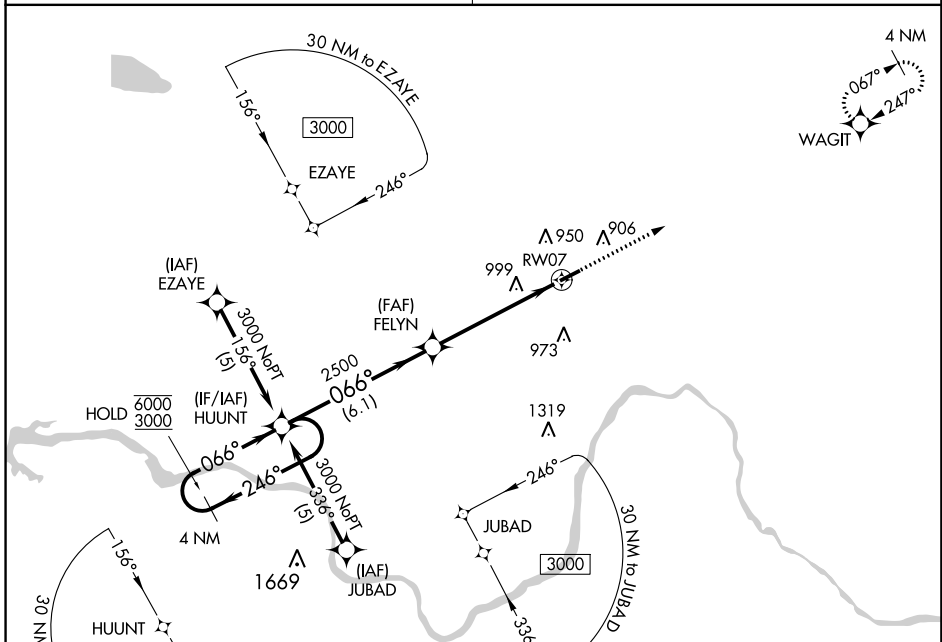
RNP APCH.

**▼** Rwy 7 helicopter visibility reduction below 3/4 SM NA. Use Grand Rapids altimeter setting, when not received, use Fremont altimeter setting and increase all MDA 20 feet.  
**▲NA**

MISSED APPROACH: Climb to 3000 direct WAGIT and hold.

GREAT LAKES APP CON ★  
**124.6 257.6**

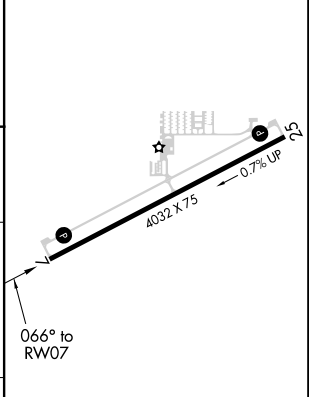
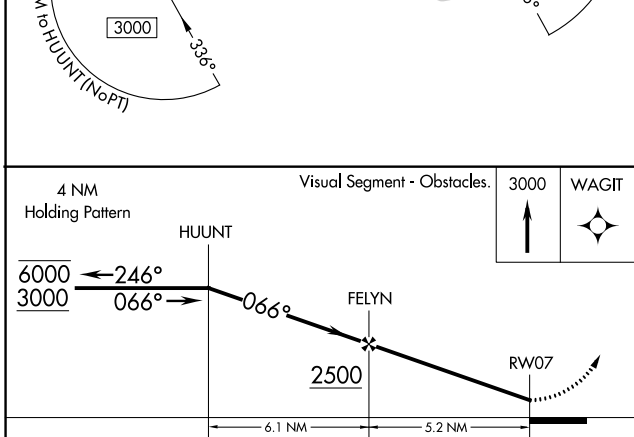
UNICOM  
**122.8 (CTAF) 0**



EC-1, 18 JUL 2019 to 15 AUG 2019

EC-1, 18 JUL 2019 to 15 AUG 2019

ELEV 775	TDZE 775
----------	----------



CATEGORY	A	B	C	D
LNAV MDA	1380-1	605 (700-1)		NA
<b>CIRCLING</b>	1380-1	605 (700-1)		NA

MIRL Rwy 7-25 **0**  
 REIL Rwy 7 and 25 **0**