

VOR/DME BSV 112.4 Chan 71	APP CRS 127°	Rwy Idg TDZE Apt Elev	N/A N/A 1164
---	------------------------	-----------------------------	---

VOR-A

CARROLL COUNTY-TOLSON (T50)

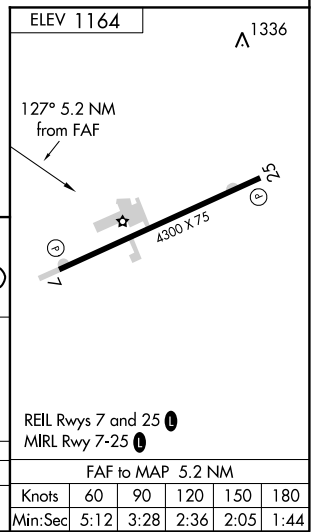
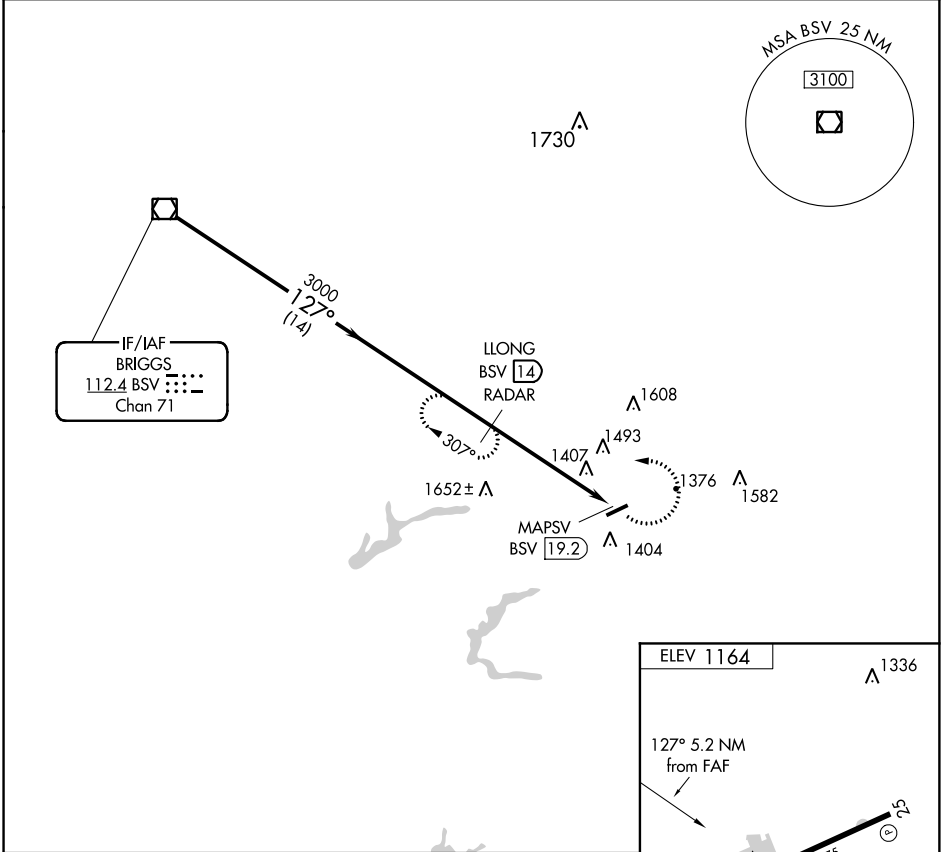
DME or RADAR required.

Procedure NA at night. Use Akron-Canton altimeter setting; when not received, use New Philadelphia altimeter setting and increase MDA 20 feet.

MISSED APPROACH: Climbing left turn to 3000 on BSV VOR/DME R-127 to LLONG/BSV 14 DME/RADAR and hold.

AKRON-CANTON APP CON ★
125.5 371.875

UNICOM
122.7 (CTAF) 0



CATEGORY	BSV VOR/DME		LLONG BSV 14 RADAR	3000 BSV R-127	LLONG BSV 14	
	3000	127°	3000		MAPSV BSV 19.2	
	14 NM		5.2 NM			
	A	B	C	D		
CIRCLING	1940-1	777 (800-1)	NA			
	FAF to MAP 5.2 NM					
	Knots	60	90	120	150	180
	Min:Sec	5:12	3:28	2:36	2:05	1:44

EC-2, 18 JUL 2019 to 15 AUG 2019

EC-2, 18 JUL 2019 to 15 AUG 2019

VOR-A