

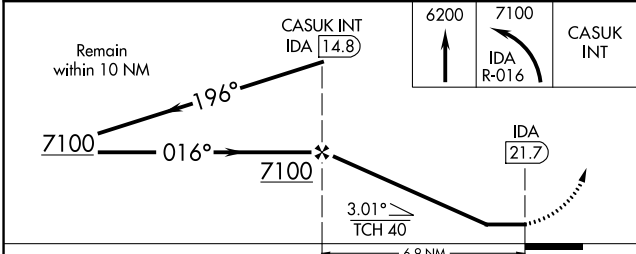
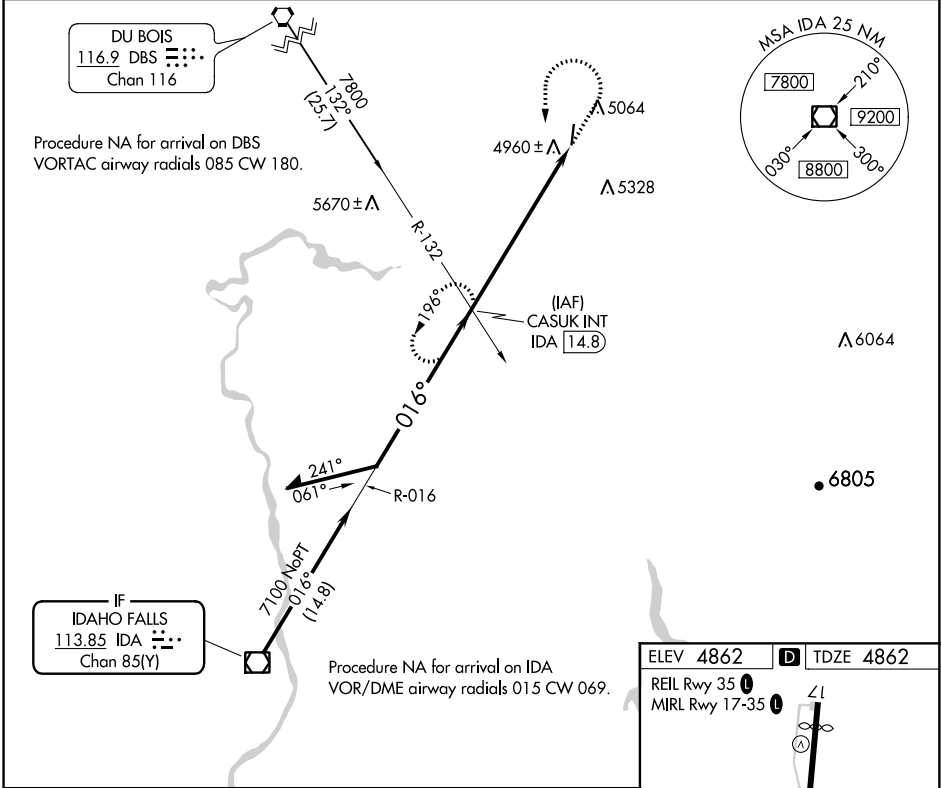
VOR/DME IDA 113.85 Chan 85 (Y)	APP CRS 016°	Rwy Idg TDZE Apt Elev	3900 4862 4862
--	------------------------	-----------------------------	---

VOR RWY 35

REXBURG-MADISON COUNTY (R.X.E)

- ▼** Rwy 35 helicopter visibility reduction below 1 SM NA.
- ▲** Straight-in Rwy 35 NA at night, Circling Rwy 35 NA at night.
- MISSED APPROACH:** Climb to 6200 then climbing left turn to 7100 on IDA R-016 to CASUK INT/IDA 14.8 DME and hold.

ASOS 135.075	SALT LAKE CENTER 128.35 239.25	UNICOM 122.8 (CTAF) 📻
------------------------	--	--



ELEV 4862	TDZE 4862
REIL Rwy 35	MIRL Rwy 17-35

420' x 75'

4890 Δ

4890 Δ

4890 Δ

4890 Δ

35

016° 6.9 NM from FAF

FAF to MAP 6.9 NM

Knots	60	90	120	150	180
Min:Sec	6:54	4:36	3:27	2:46	2:18

CATEGORY	A	B	C	D
S-35	5680-1 818 (900-1)	5680-1¼ 818 (900-1¼)	5680-2½ 818 (900-2½)	
📻 CIRCLING	5680-1¼ 818 (900-1¼)		5680-2½ 818 (900-2½)	5760-3 898 (900-3)

NW-1, 18 JUL 2019 to 15 AUG 2019

NW-1, 18 JUL 2019 to 15 AUG 2019