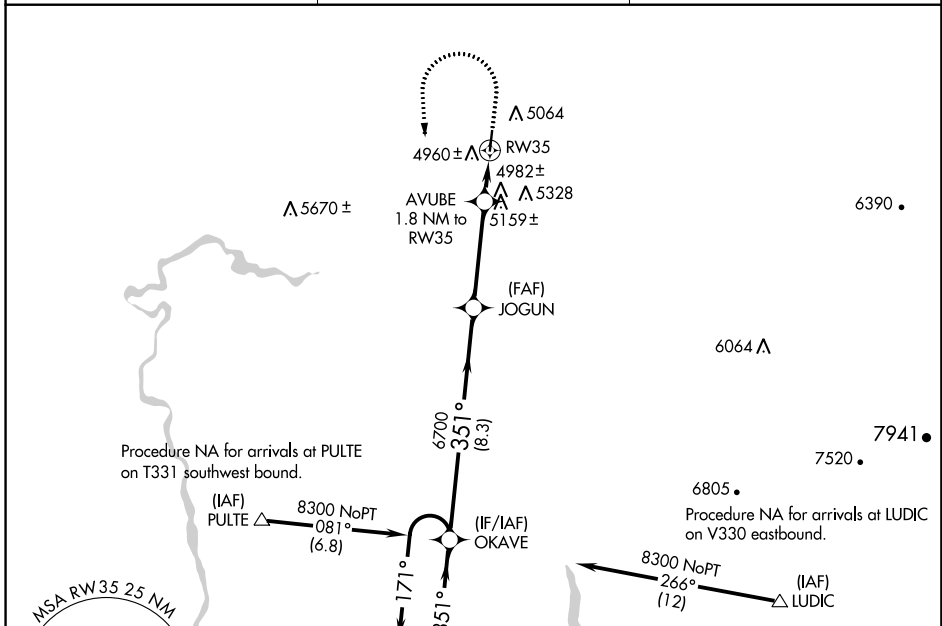


APP CRS 351°	Rwy Idg 3900
	TDZE 4862
	Apt Elev 4862

RNAV (GPS) RWY 35

REXBURG-MADISON COUNTY (R.X.E)

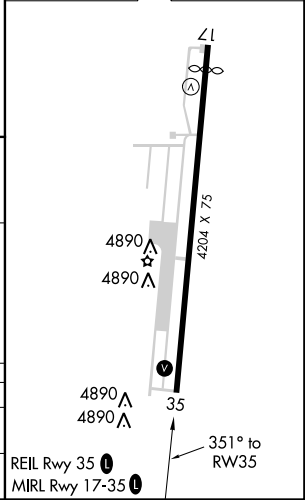
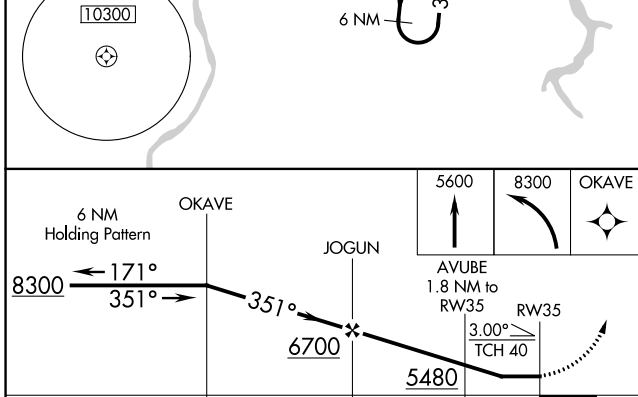
<p>⚠ Rwy 35 helicopter visibility reduction below 3/4 SM NA. DME/DME RNP-0.3 NA.</p> <p>⚠ When local altimeter setting not received, use Idaho Falls altimeter setting and increase all MDA 80 feet and increase LNAV Cat C/D visibility 1/8 SM and Circling Cat C/D visibility 1/4 SM.</p>	<p>MISSED APPROACH: Climb to 5600 then climbing left turn to 8300 direct OKAVE and hold.</p>	
<p>ASOS 135.075</p>	<p>SALT LAKE CENTER 128.35 239.25</p>	<p>UNICOM 122.8 (CTAF) 0</p>



NW-1, 18 JUL 2019 to 15 AUG 2019

NW-1, 18 JUL 2019 to 15 AUG 2019

ELEV 4862	D TDZE 4862
-----------	--------------------



CATEGORY	A	B	C	D
LNAV MDA	5260-1	398 (400-1)	5260-1 1/8	398 (400-1 1/8)
CIRCLING	5380-1 518 (600-1)	5580-1 718 (800-1)	5580-2 718 (800-2)	5680-2 3/4 818 (900-2 3/4)