

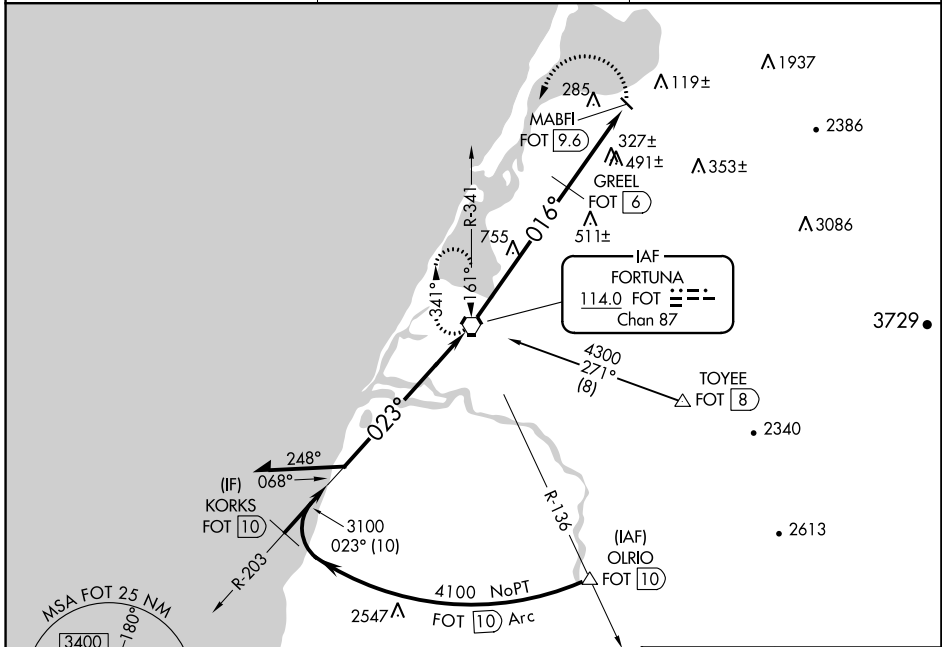
VORTAC FOT 114.0 Chan 87	APP CRS 016°	Rwy Idg TDZE Apt Elev	N/A N/A 11
--	------------------------	-----------------------------	---------------------------------------

VOR-A
MURRAY FIELD (EKA)

Procedure NA at night.
NA Use Arcata altimeter setting; when not received, use Crescent City altimeter setting and increase all MDA 100 feet.

MISSED APPROACH: Climbing left turn to 3000 direct FOT VORTAC and hold.

CALIFORNIA REDWOOD COAST-HUMBOLDT COUNTY ASOS 118.525	SEATTLE CENTER 124.85 306.3	UNICOM 122.7 (CTAF)
---	---------------------------------------	-------------------------------



*1400 when using Crescent City altimeter setting.

Remain within 10 NM

4000

203°

023°

3100

016°

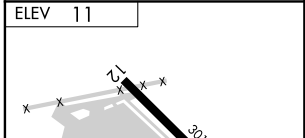
3000 FOT

GREEL FOT [6]

MABFI FOT [9.6]

6 NM

3.6 NM



CATEGORY	A	B	C	D
CIRCLING	1300-1¼ 1289 (1300-1¼)	1300-1½ 1289 (1300-1½)	1300-3 1289 (1300-3)	NA
GREEN FIX MINIMUMS				
CIRCLING	860-1 849 (900-1)	880-1¼ 869 (900-1¼)	1060-3 1049 (1100-3)	NA

ELEV	11
FAF to MAP 9.6 NM	
Knots	60 90 120 150 180
Min:Sec	9:36 6:24 4:48 3:50 3:12

CIRCLING	1300-1¼ 1289 (1300-1¼)	1300-1½ 1289 (1300-1½)	1300-3 1289 (1300-3)	NA
GREEN FIX MINIMUMS				
CIRCLING	860-1 849 (900-1)	880-1¼ 869 (900-1¼)	1060-3 1049 (1100-3)	NA

SW-2, 18 JUL 2019 to 15 AUG 2019

SW-2, 18 JUL 2019 to 15 AUG 2019