

APP CRS 020°	Rwy Idg TDZE Apt Elev	N/A N/A 11
------------------------	-----------------------------	---------------------------------------

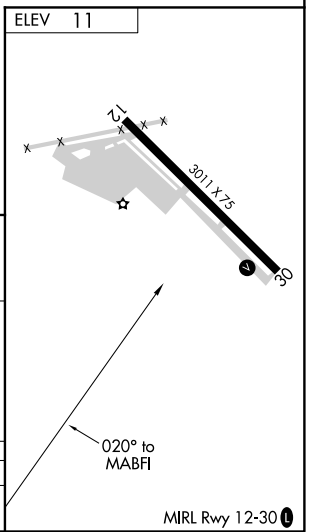
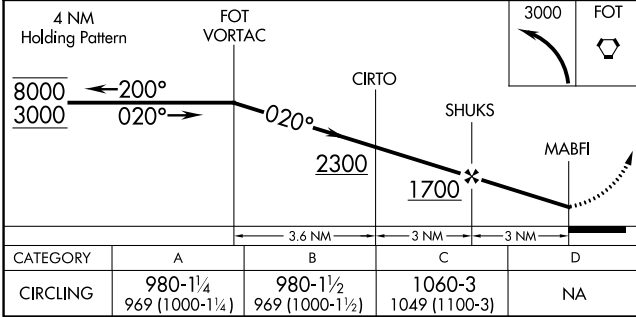
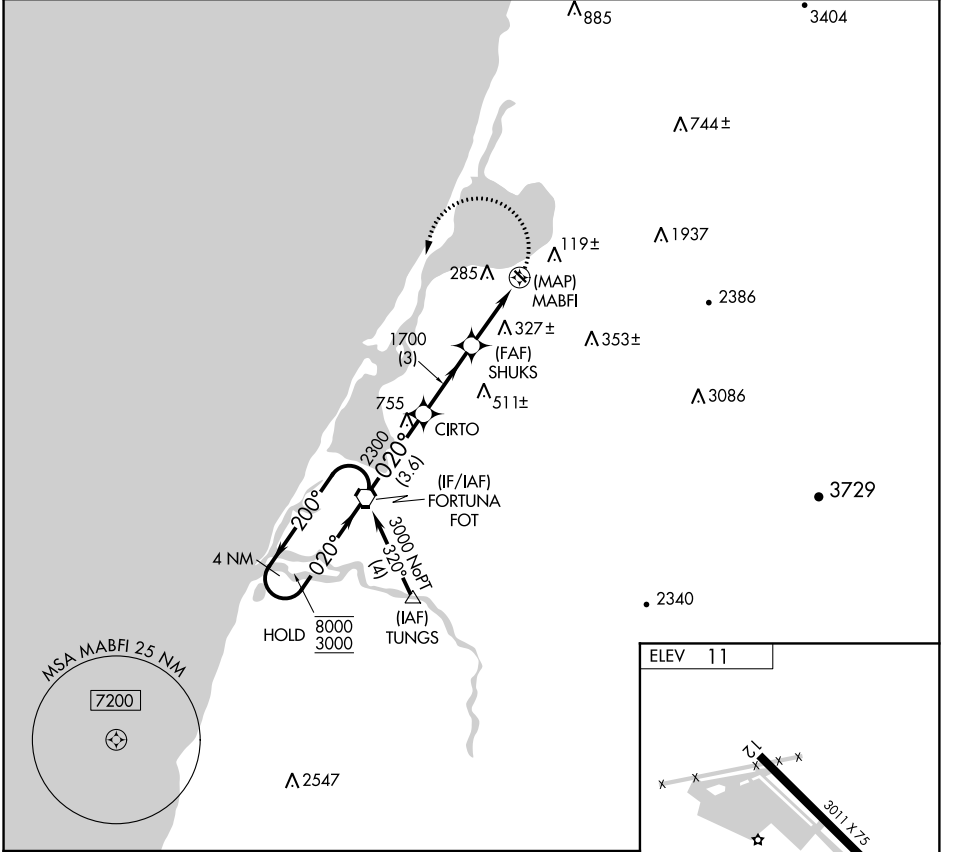
RNAV (GPS)-B

MURRAY FIELD (EKA)

RNP Apch. MISSED APPROACH: Climbing left turn to 3000 direct FOT VORTAC and hold.

NA Procedure NA at night. Use Arcata altimeter setting when not received, use Crescent City altimeter setting and increase all MDA 100 feet.

CALIFORNIA REDWOOD COAST-HUMBOLDT COUNTY ASOS 118.525	SEATTLE CENTER 124.85 306.3	UNICOM 122.7 (CTAF) 0
---	---------------------------------------	---------------------------------



CATEGORY	A	B	C	D
CIRCLING	980-1¼ 969 (1000-1¼)	980-1½ 969 (1000-1½)	1060-3 1049 (1100-3)	NA

SW-2, 18 JUL 2019 to 15 AUG 2019

SW-2, 18 JUL 2019 to 15 AUG 2019