

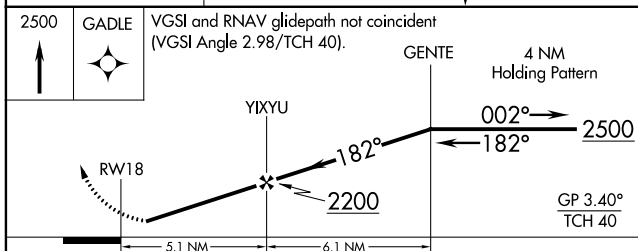
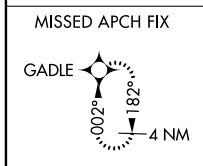
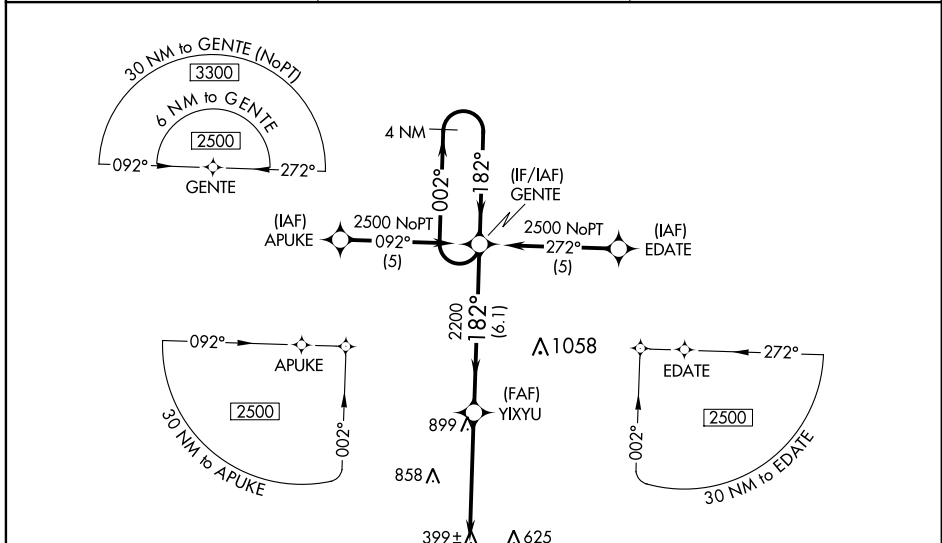
WAAS CH 62808 W18A	APP CRS 182°	Rwy Idg TDZE Apt Elev	5000 304 304
--	------------------------	-----------------------------	---

RNAV (GPS) RWY 18

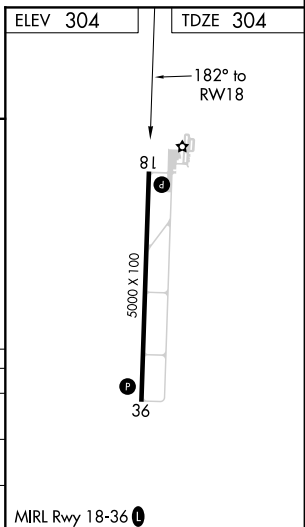
DEXTER MUNI (DXE)

RNP APCH.	<p>MISSED APPROACH: Climb to 2500 direct GADLE and hold.</p>
<p>▽ Baro-VNAV NA. Use Poplar Bluff altimeter setting, when not received use Cape Girardeau Rgnl altimeter setting and increase all DA 33 feet and LPV visibilities ¼ mile all Cats and increase all MDA 40 feet. Rwy 18 helicopter visibility reduction below ¾ SM NA.</p>	

POPLAR BLUFF MUNI ASOS 124.225	MEMPHIS CENTER 133.65 292.15	UNICOM 122.8 (CTAF) 0
--	--	---------------------------------



CATEGORY	A	B	C	D
LPV DA	724-1¼	420 (500-1¼)		NA
LNNAV/VNAV DA	854-1¾	550 (600-1¾)		NA
LNNAV MDA	1200-1¼	896 (900-1¼)	1200-2¾ 896 (900-2¾)	NA



NC-3, 18 JUL 2019 to 15 AUG 2019

NC-3, 18 JUL 2019 to 15 AUG 2019