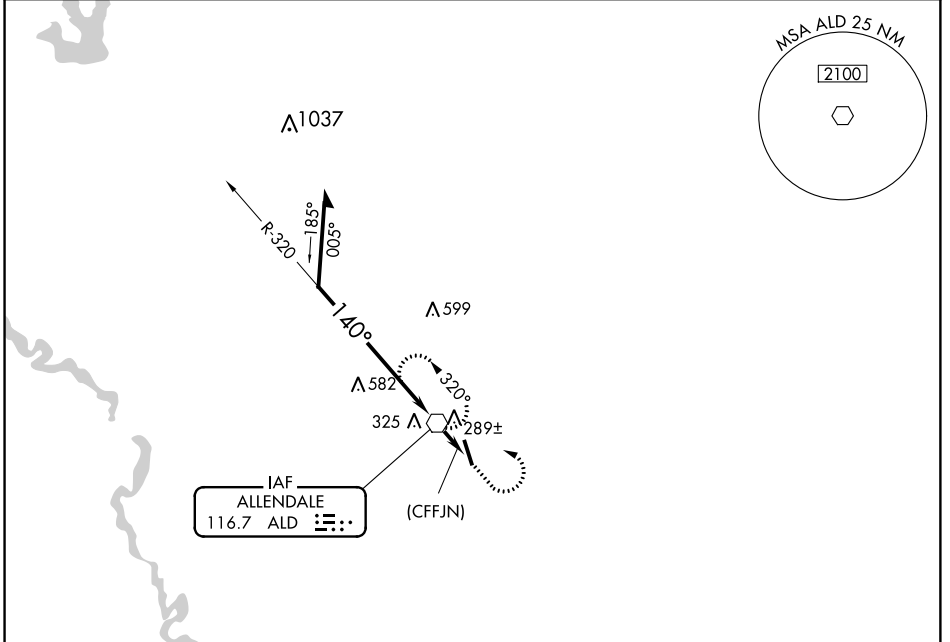


VOR ALD 116.7	APP CRS 140°	Rwy Idg TDZE Apt Elev	N/A N/A 162
-------------------------	------------------------	-----------------------------	--

VOR-A
ALLEDALE COUNTY (A/QX)

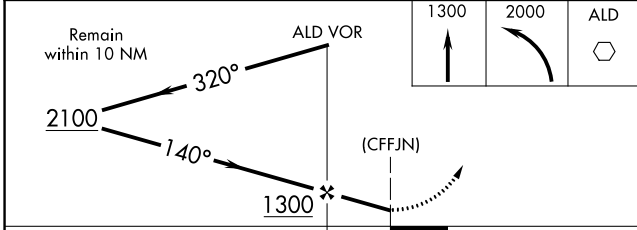
<p>⚠ When local altimeter setting not received, use Augusta Rgnl at Bush Field altimeter setting.</p>	<p>MISSED APPROACH: Climb to 1300, then climbing left turn to 2000 direct ALD VOR and hold.</p>
--	--

AWOS-3PT 118.95	JACKSONVILLE CENTER 132.925 363.2	UNICOM 122.8 (CTAF)
---------------------------	---	-------------------------------



SE-2: 18 JUL 2019 to 15 AUG 2019

SE-2: 18 JUL 2019 to 15 AUG 2019



CATEGORY	A	B	C	D	FAF to MAP 1.1 NM					
C CIRCLING	860-1	698 (700-1)		NA	Knots	60	90	120	150	180
					Min:Sec	1:06	0:44	0:33	0:26	0:22