

WAAS CH <b>77733</b> <b>W35A</b>	APP CRS <b>348°</b>	Rwy Idg TDZE Apt Elev	<b>5001</b> <b>159</b> <b>162</b>
--	------------------------	-----------------------------	---

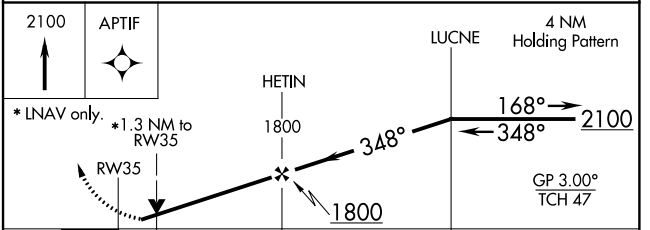
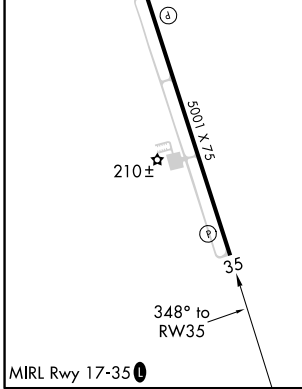
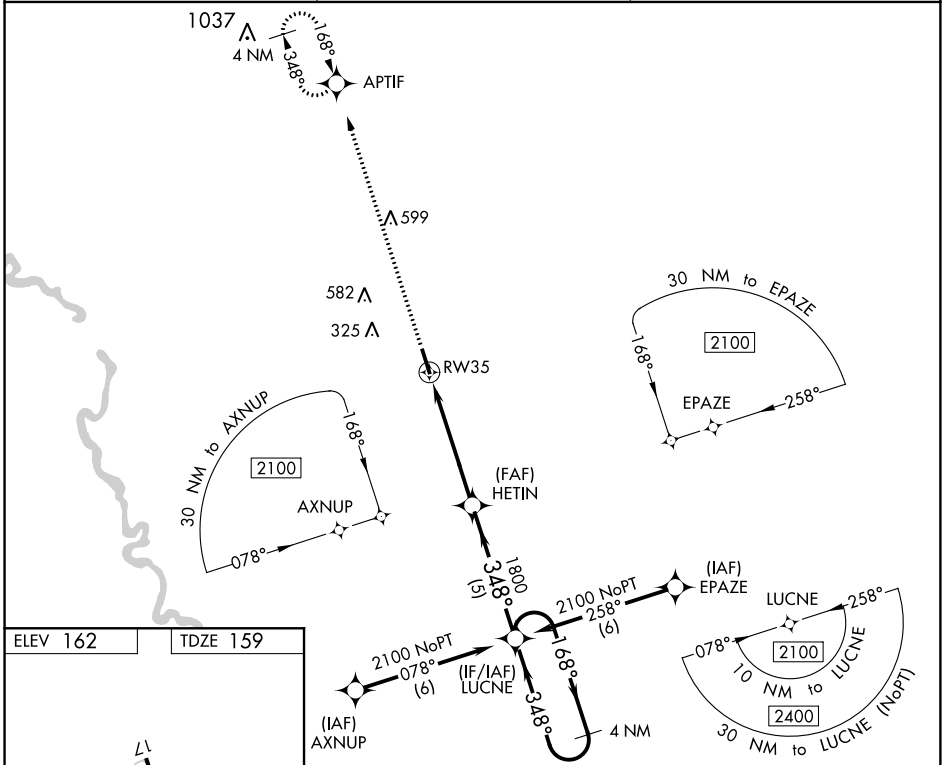
# RNAV (GPS) RWY 35

ALLENDALE COUNTY (A.Q.X)

**⚠** For uncompensated Baro-VNAV systems, LNAV/VNAV NA below -15°C (5°F) or above 54°C (130°F). DME/DME RNP-0.3 NA. When local altimeter setting not received, use Augusta Rgnl at Bush Field altimeter setting and increase all DA 99 feet and all MDA 100 feet, increase LPV, LNAV/VNAV all Cats visibility 3/8 mile. Baro-VNAV and VDP NA when using Augusta Rgnl at Bush Field altimeter setting.

MISSED APPROACH: Climb to 2100 direct APTIF and hold.

AWOS-3PT <b>118.95</b>	JACKSONVILLE CENTER <b>132.925 363.2</b>	UNICOM <b>122.8 (CTAF) 0</b>
---------------------------	---	---------------------------------



CATEGORY	A	B	C	D
LPV DA	409-3/4	250 (300-3/4)		NA
LNAV/VNAV DA	591-1 1/2	432 (500-1 1/2)		NA
LNAV MDA	600-1	441 (500-1)		NA
<b>C</b> CIRCLING	620-1	458 (500-1)		NA

SE-2, 18 JUL 2019 to 15 AUG 2019

SE-2, 18 JUL 2019 to 15 AUG 2019