

WAAS CH <b>45733</b> <b>W17A</b>	APP CRS <b>168°</b>	Rwy Idg TDZE <b>162</b> Apt Elev <b>162</b>	<b>5001</b>
--	------------------------	---	-------------

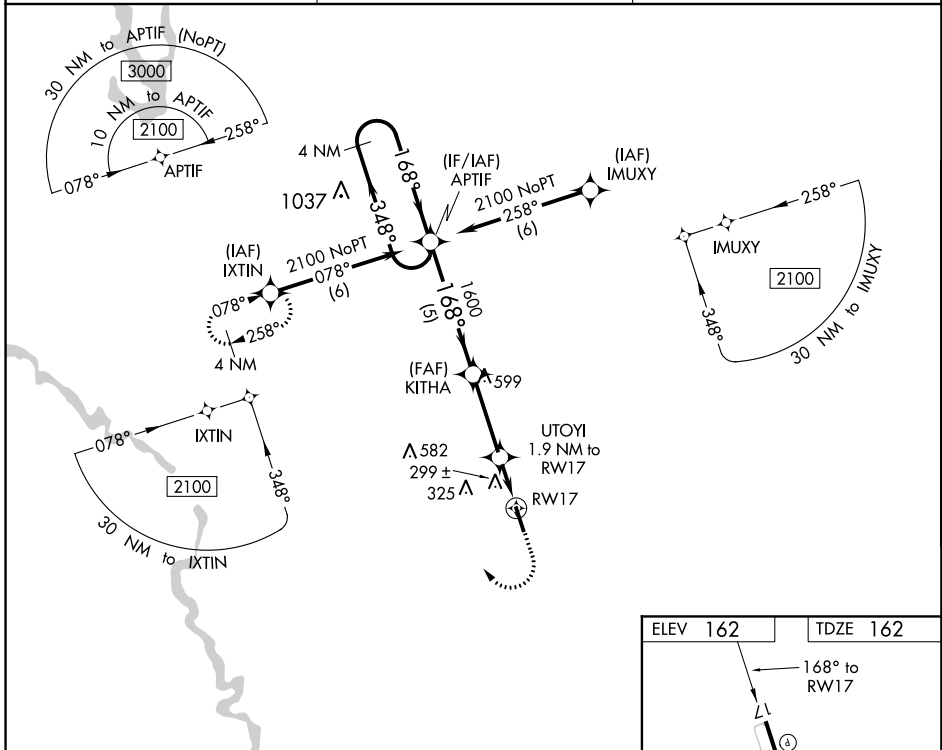
# RNAV (GPS) RWY 17

ALLENDALE COUNTY (A.Q.X)

**⚠** For uncompensated Baro-VNAV systems, LNAV/VNAV NA below -15°C (5°F) or above 54°C (130°F). DME/DME RNP-0.3 NA. Helicopter visibility reduction below 3/4 SM NA. Baro-VNAV and VDP NA when using Augusta Rgnl at Bush Field altimeter setting. When local altimeter setting not received, use Augusta Rgnl at Bush Field altimeter setting and increase all DA 99 feet and all MDA 100 feet, increase LPV all Cats visibility 1/4 mile, LNAV/VNAV all Cats 3/8 mile.

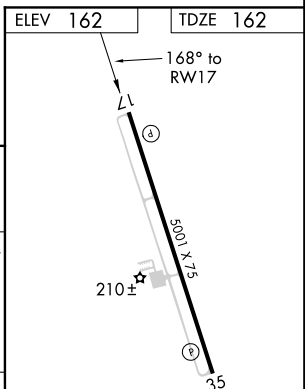
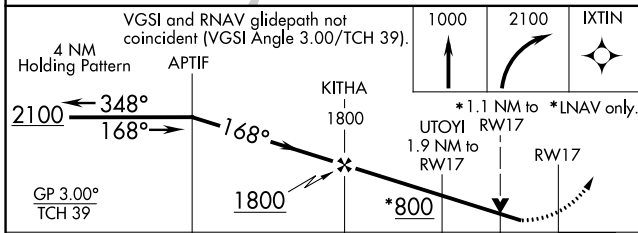
**MISSED APPROACH:** Climb to 1000 then climbing right turn to 2100 direct IXTIN and hold.

AWOS-3PT <b>118.95</b>	JACKSONVILLE CENTER <b>132.925 363.2</b>	UNICOM <b>122.8 (CTAF) 0</b>
---------------------------	---	---------------------------------



SE-2, 18 JUL 2019 to 15 AUG 2019

SE-2, 18 JUL 2019 to 15 AUG 2019



CATEGORY	A	B	C	D
LPV DA	478-1 1/8	316 (400-1 1/8)		NA
LNAV/VNAV DA	562-1 3/8	400 (400-1 3/8)		NA
LNAV MDA	560-1	398 (400-1)		NA
<b>C</b> CIRCLING	620-1	458 (500-1)		NA

MIRL Rwy 17-35 0