

WAAS CH <b>78220</b> <b>W12A</b>	APP CRS <b>117°</b>	Rwy Idg TDZE Apt Elev	<b>3449</b> <b>940</b> <b>940</b>
--	------------------------	-----------------------------	---

# RNAV (GPS) RWY 12

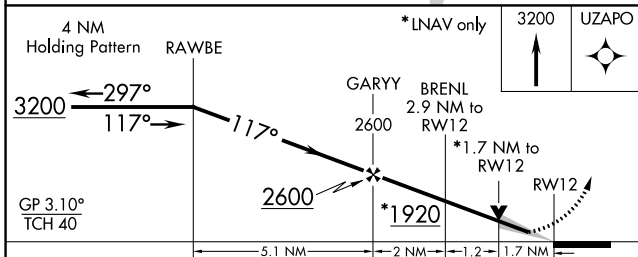
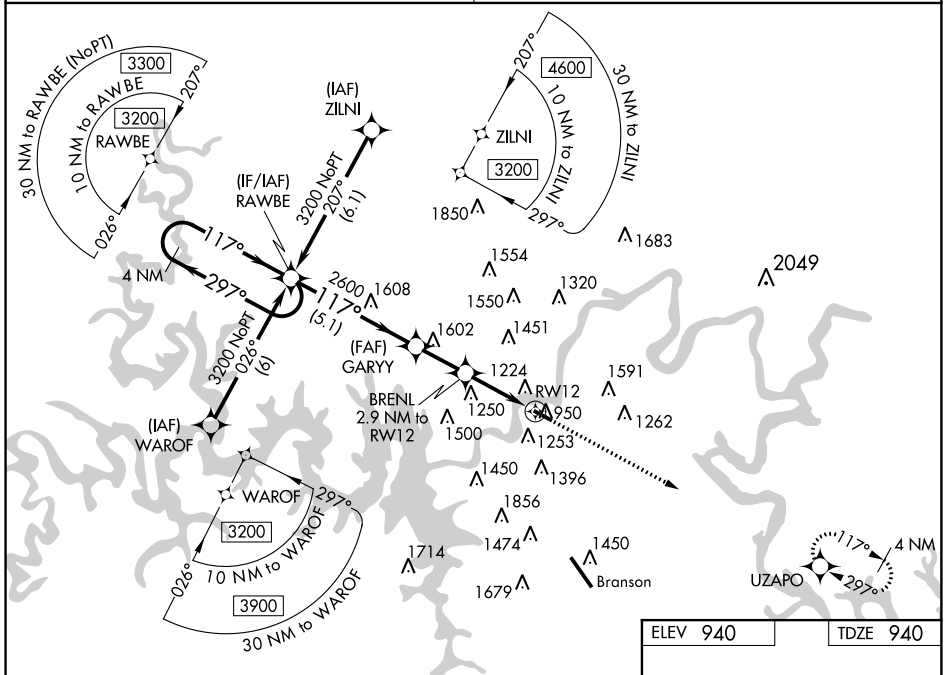
M GRAHAM CLARK DOWNTOWN (PLK)

**NA** Baro-VNAV NA when using Branson altimeter setting. For uncompensated Baro-VNAV systems, LNAV/VNAV NA below -16°C (4°F) or above 54°C (130°F). DME/DME RNP-0.3 NA. VDP NA with Branson altimeter setting. Obtain local altimeter setting on CTAF; when not received, use Branson altimeter setting and increase all DA 65 feet and all MDA 80 feet; increase LPV all Cats visibility 1/8 mile and LNAV/VNAV all Cats visibility 1/4 mile.

**MISSED APPROACH:**  
Climb to 3200 direct UZAPO and hold.

SPRINGFIELD APP CON  
**126.35**

UNICOM  
**122.7 (CTAF) 0**



ELEV 940	TDZE 940
REIL Rwy 12 and 30 0	
MIRL Rwy 12-30 0	

CATEGORY	A	B	C	D
LPV DA	1140-3/4	200 (200-3/4)		NA
LNAV/VNAV DA	1416-1 5/8	476 (500-1 5/8)		NA
LNAV MDA	1540-1	600 (600-1)		NA
CIRCLING	1560-1	620 (700-1)		NA

NC-3, 18 JUL 2019 to 15 AUG 2019

NC-3, 18 JUL 2019 to 15 AUG 2019