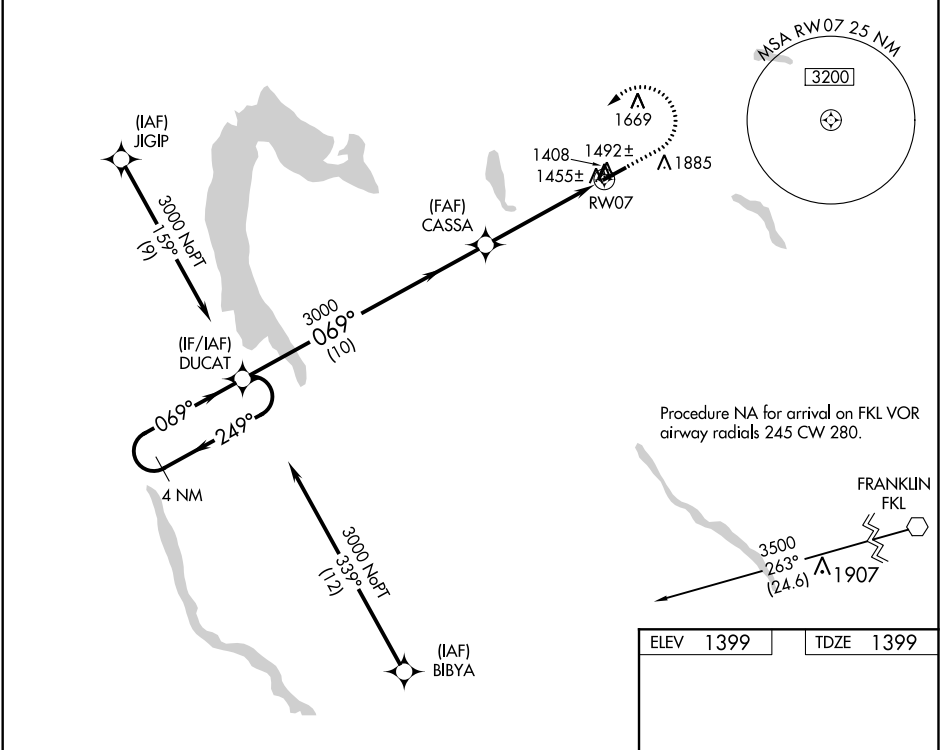


|  |                        |   |             |
|--|------------------------|---|-------------|
| WAAS<br>CH <b>53724</b><br><b>W07A</b> | APP CRS<br><b>069°</b> | Rwy Idg<br>TDZE <b>1399</b><br>Apt Elev <b>1399</b> | <b>5001</b> |
|--|------------------------|---|-------------|

# RNAV (GPS) RWY 7

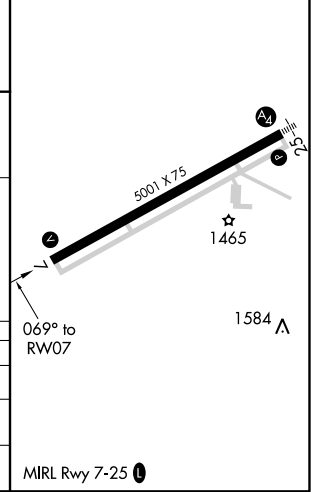
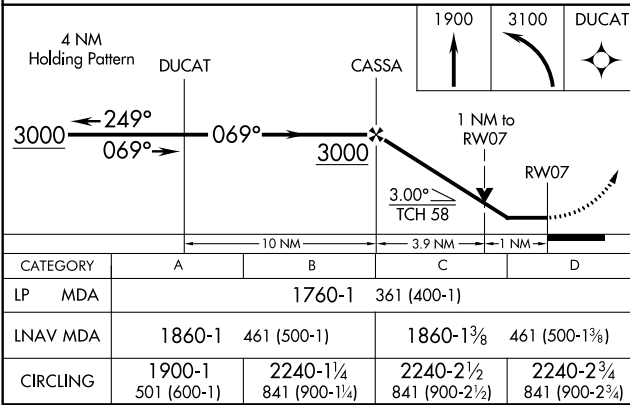
PORT MEADVILLE (GKJ)

|  |   |   |                                 |
|--|---|---|---------------------------------|
| RNP APCH.  |   | MISSED APPROACH: Climb to 1900 then climbing left turn to 3100 direct DUCAT and hold. |                                 |
| Rwy 7 helicopter visibility reduction below 3/4 SM NA. |   |   |                                 |
| ASOS<br><b>121.425</b>                                 | YOUNGSTOWN APP CON *<br><b>133.95 322.3</b> | CLNC DEL<br><b>124.95</b>   | UNICOM<br><b>123.0 (CTAF) 0</b> |



Procedure NA for arrival on FKL VOR airway radials 245 CW 280.

|           |           |
|-----------|-----------|
| ELEV 1399 | TDZE 1399 |
|-----------|-----------|



NE-4, 18 JUL 2019 to 15 AUG 2019

NE-4, 18 JUL 2019 to 15 AUG 2019