

LOC I-GKJ <b>108.5</b>	APP CRS <b>249°</b>	Rwy Idg <b>5001</b>
		TDZE <b>1399</b>
		Apt Elev <b>1399</b>

# LOC RWY 25

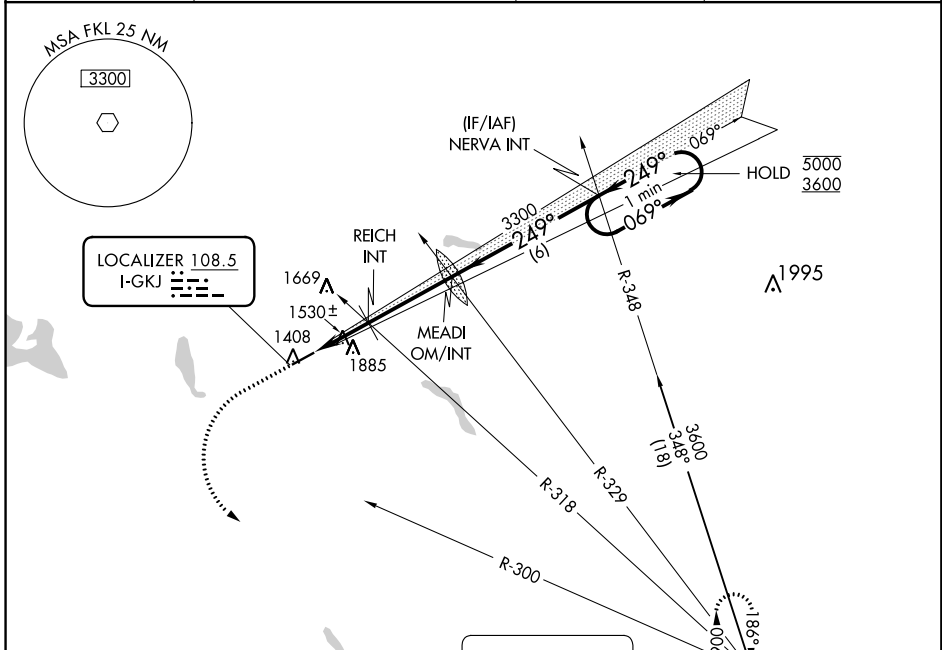
PORT MEADVILLE (GKJ)

**RADAR required.**

▼ Inop table does not apply.  
 ▲ Rwy 25 helicopter visibility reduction below 3/4 SM NA.

MALS MISSED APPROACH: Climb to 2000 then climbing left turn to 3600 on heading 125° and FKL VOR R-300 to FKL VOR and hold.

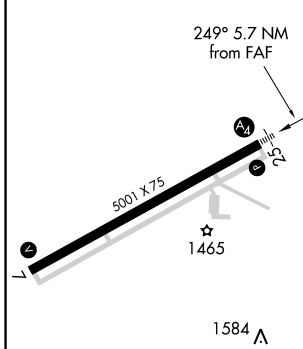
ASOS <b>121.425</b>	YOUNGSTOWN APP CON * <b>133.95 322.3</b>	CLNC DEL <b>124.95</b>	UNICOM <b>123.0 (CTAF) 0</b>
------------------------	---	---------------------------	---------------------------------



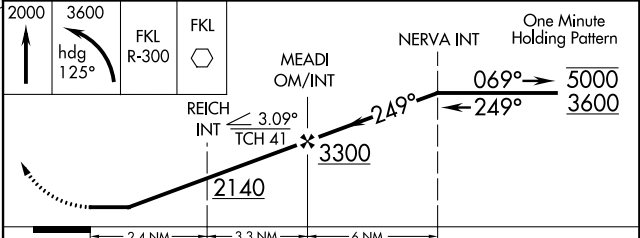
NE-4, 18 JUL 2019 to 15 AUG 2019

NE-4, 18 JUL 2019 to 15 AUG 2019

ELEV 1399	TDZE 1399
-----------	-----------



2000	3600	FKL R-300	FKL	MEADI OM/INT	NERVA INT	One Minute Holding Pattern
↑	hdg 125°					



MIRL Rwy 7-25 0	FAF to MAP 5.7 NM				
Knots	60	90	120	150	180
Min:Sec	5:42	3:48	2:51	2:17	1:54
CATEGORY	A	B	C	D	
S-LOC 25	1780-1	381 (400-1)	1780-1 7/8	381 (400-1 7/8)	
CIRCLING	1900-1 501 (600-1)	2240-1 1/4 841 (900-1 1/4)	2240-2 1/2 841 (900-2 1/2)	2240-2 3/4 841 (900-2 3/4)	