

ADRIAN, MICHIGAN

AL-5555 (FAA)

18144

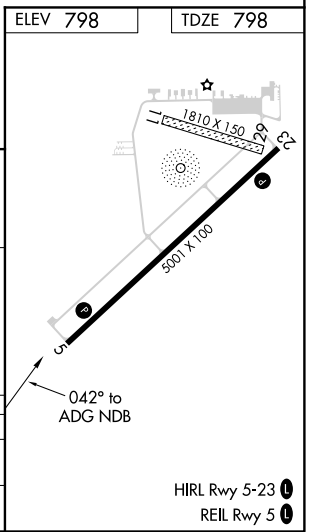
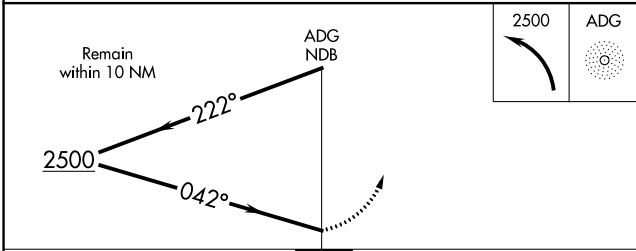
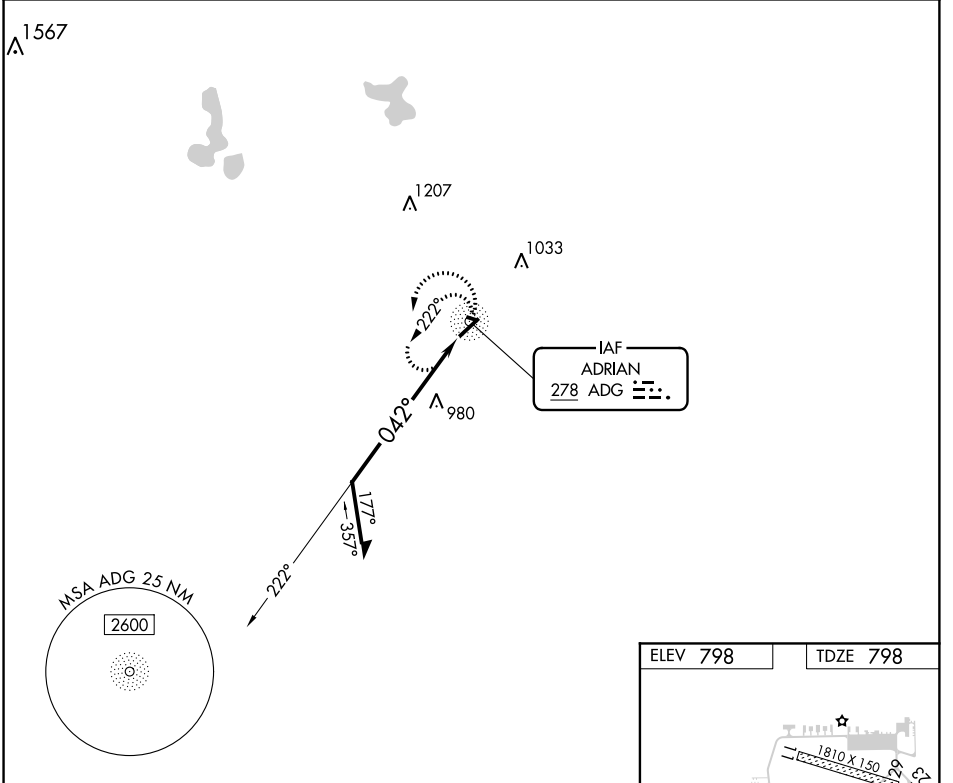
ADG NDB <b>278</b>	APP CRS <b>042°</b>	Rwy Idg <b>5001</b>
		TDZE <b>798</b>
		Apt Elev <b>798</b>

# NDB RWY 5

LENAWEE COUNTY (ADG)

RADAR required for procedure entry.	MISSED APPROACH: Climbing left turn to 2500 in ADG NDB holding pattern.
▼ ▲ NA	

ASOS <b>118.375</b>	TOLEDO APP CON <b>134.35 317.55</b>	UNICOM <b>122.8 (CTAF)</b>
------------------------	--	-------------------------------



CATEGORY	A	B	C	D
S-5	1380-1	582 (600-1)	1380-1¾	582 (600-1¾)
CIRCLING	1380-1	582 (600-1)	1380-1¾	1380-2 582 (600-2)

ADRIAN, MICHIGAN  
Orig-A 24MAY18

41°52'N-84°05'W

LENAWEE COUNTY (ADG)  
**NDB RWY 5**

HIRL Rwy 5-23  
REIL Rwy 5

EC-1, 18 JUL 2019 to 15 AUG 2019

EC-1, 18 JUL 2019 to 15 AUG 2019