

VORTAC RMG 115.4 Chan 101	APP CRS 188°	Rwy Idg TDZE Apt Elev	N/A N/A 974
---	------------------------	-----------------------------	--

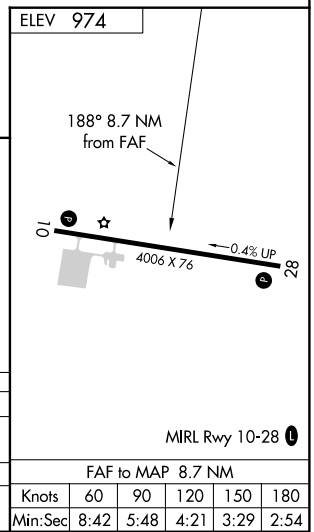
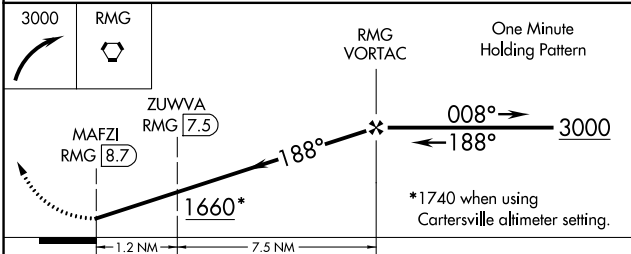
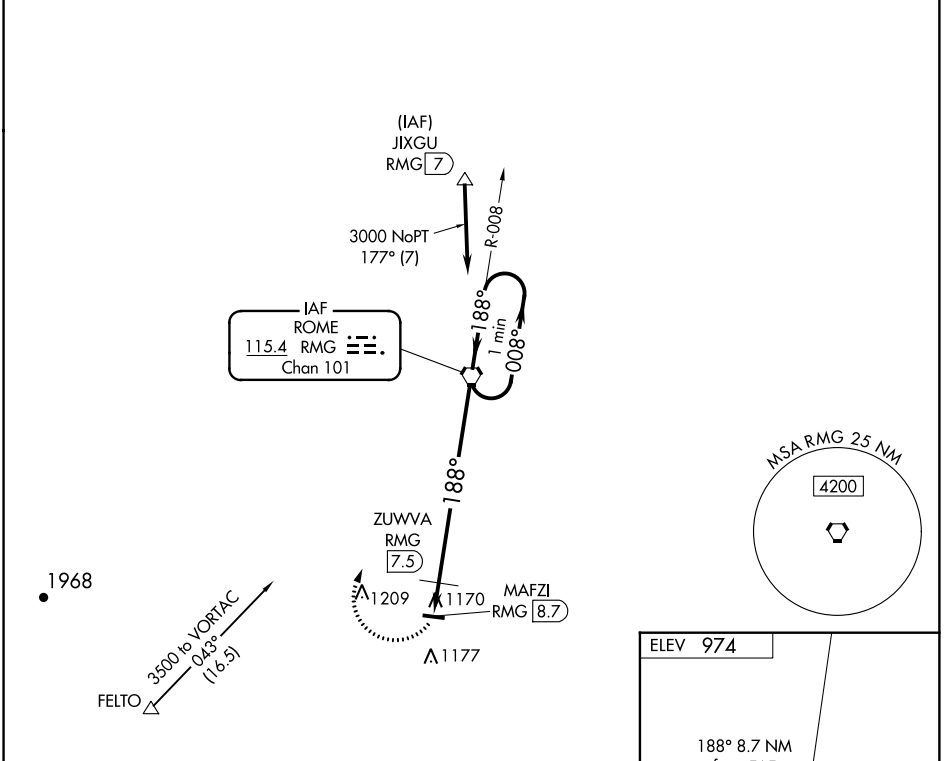
VOR-A

POLK COUNTY AIRPORT- CORNELIUS MOORE FIELD (4A4)

Obtain local altimeter setting on CTAF; when not received, use Cartersville altimeter setting and increase all MDA 80 feet and Cats C/D visibility ¼ mile and ZUWVA fix minimums Cat C ¼ mile. When VGSI inoperative, procedure NA at night. Visibility reduction by helicopters NA.

MISSED APPROACH: Climbing right turn to 3000 direct RMG VORTAC and hold.

ATLANTA CENTER 124.5 270.325	UNICOM 122.8 (CTAF)
--	-------------------------------



CATEGORY	A	B	C	D
CIRCLING	1660-1	686 (700-1)	1660-2 686 (700-2)	1660-2¼ 686 (700-2¼)
ZUWVA FIX MINIMUMS				
CIRCLING	1520-1	546 (600-1)	1540-1½ 566 (600-1½)	1540-2 566 (600-2)

FAF to MAP 8.7 NM					
Knots	60	90	120	150	180
Min:Sec	8:42	5:48	4:21	3:29	2:54

VOR-A

SE-4, 18 JUL 2019 to 15 AUG 2019

SE-4, 18 JUL 2019 to 15 AUG 2019