

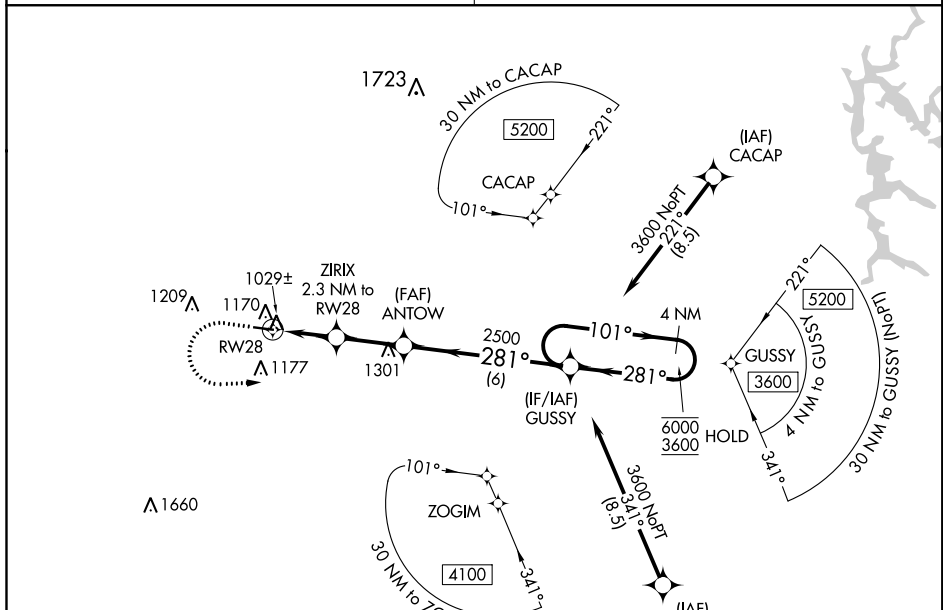
WAAS CH 62824 W28A	APP CRS 281°	Rwy Idg TDZE Apt Elev	4006 974 974
--	------------------------	-----------------------------	---

RNAV (GPS) RWY 28

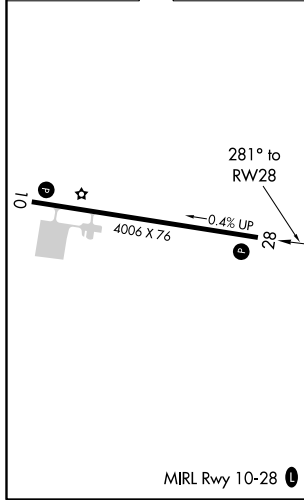
POLK COUNTY AIRPORT-CORNELIUS MOORE FIELD (4A4)

<p>RNP APCH.</p> <p>▼ Rwy 28 helicopter visibility reduction below 3/4 SM NA. Obtain local altimeter setting on CTAF, when not received, use Cartersville altimeter setting and increase all MDA 80 feet; increase LP and LNAV Cats C/D visibility 1/8 SM.</p>	<p>MISSED APPROACH: Climb to 1500 then climbing left turn to 3600 direct GUSSY and hold.</p>
---	--

<p>ATLANTA CENTER 124.5 270.325</p>	<p>UNICOM 122.8 (CTAF) 0</p>
--	---



ELEV 974	TDZE 974
----------	----------



	1500	3600	GUSSY					
	↑	↶	✧					
			ZIRIX 2.3 NM to RW28	ANTOW	GUSSY	4 NM Holding Pattern		
	0.9 NM to RW28	1.4 NM	2.4 NM	6 NM	281°	281°	6000	3600
	0.9 NM	1.4 NM	2.4 NM	6 NM	1720	2500		
CATEGORY	A	B	C	D				
LP MDA	1280-1 326 (400-1)							
LNAV MDA	1400-1	446 (500-1)	1400-1 3/8	446 (500-1 3/8)				

MIRL Rwy 10-28 0

SE-4, 18 JUL 2019 to 15 AUG 2019

SE-4, 18 JUL 2019 to 15 AUG 2019