

WAAS CH 49223 W10A	APP CRS 101°	Rwy Idg TDZE Apt Elev	4006 974 974
--	------------------------	-----------------------------	---

RNAV (GPS) RWY 10

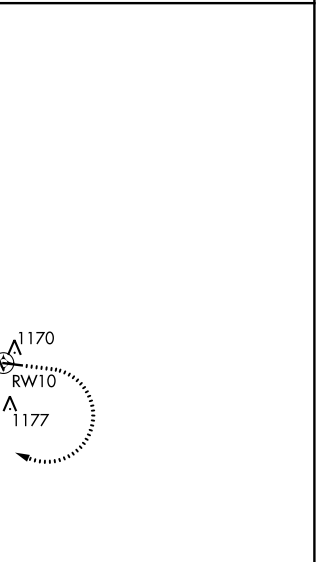
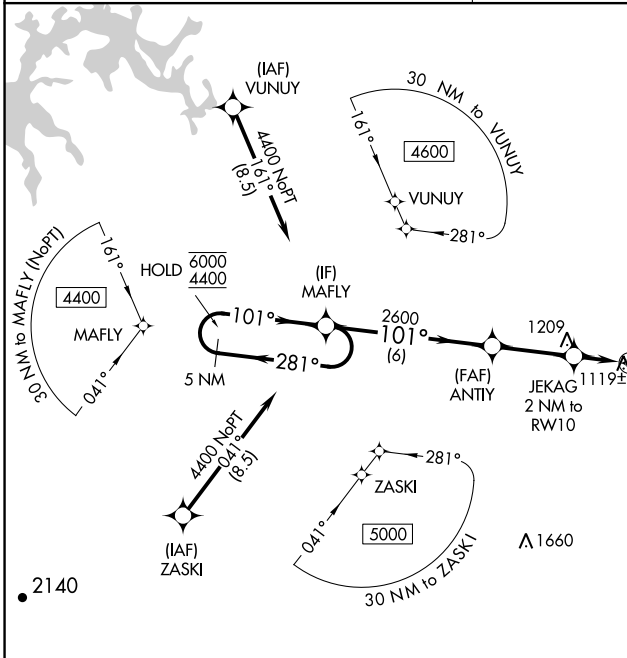
POLK COUNTY AIRPORT-CORNELIUS MOORE FIELD (4A4)

RNP APCH.
⚠ NA Baro-VNAV and VDP NA when using Cartersville altimeter setting. Rwy 10 helicopter visibility reduction below 3/4 SM NA. For uncompensated Baro-VNAV systems, LNAV/VNAV NA below -16°C or above 37°C. Obtain local altimeter setting on CTAF, when not received, use Cartersville altimeter setting and increase all DA 68 feet and all MDA 80 feet; increase LNAV Cat C/D visibility 1/4 SM.

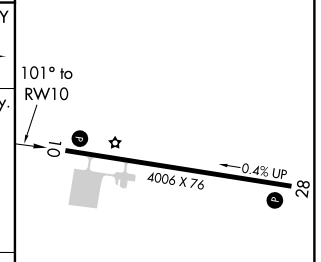
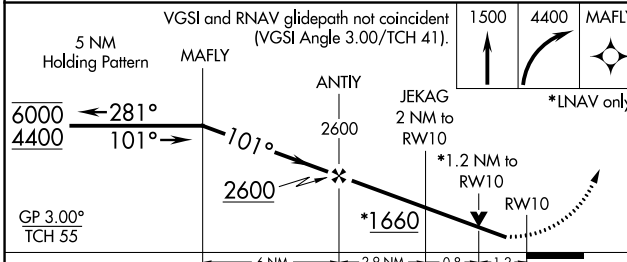
MISSED APPROACH: Climb to 1500 then climbing right turn to 4400 direct MAFLY and hold. Continue climb-in-hold to 4400.

ATLANTA CENTER
124.5 270.325

UNICOM
122.8 (CTAF) 0



ELEV 974	TDZE 974
----------	----------



CATEGORY	A	B	C	D
LPV DA		1256-1	282 (300-1)	
LNAV/VNAV DA		1430-1½	456 (500-1½)	
LNAV MDA	1380-1	406 (500-1)	1380-1½	406 (500-1½)

MIRL Rwy 10-28 0

RNAV (GPS) RWY 10

SE-4, 18 JUL 2019 to 15 AUG 2019

SE-4, 18 JUL 2019 to 15 AUG 2019