

WAAS CH 99626 W18A	APP CRS 176°	Rwy Idg 3907 TDZE 757 Apt Elev 758
--	------------------------	---

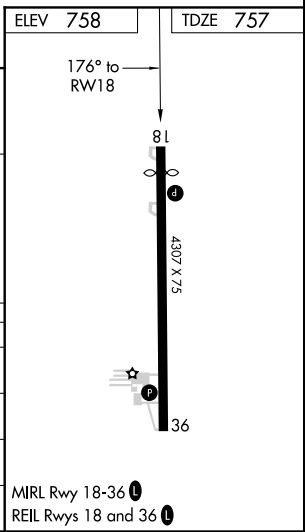
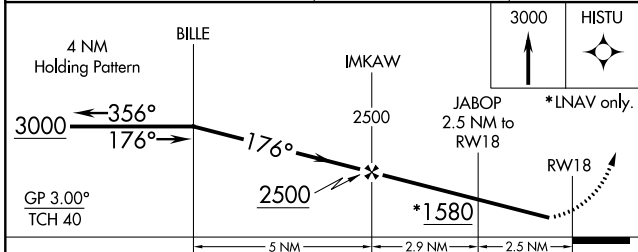
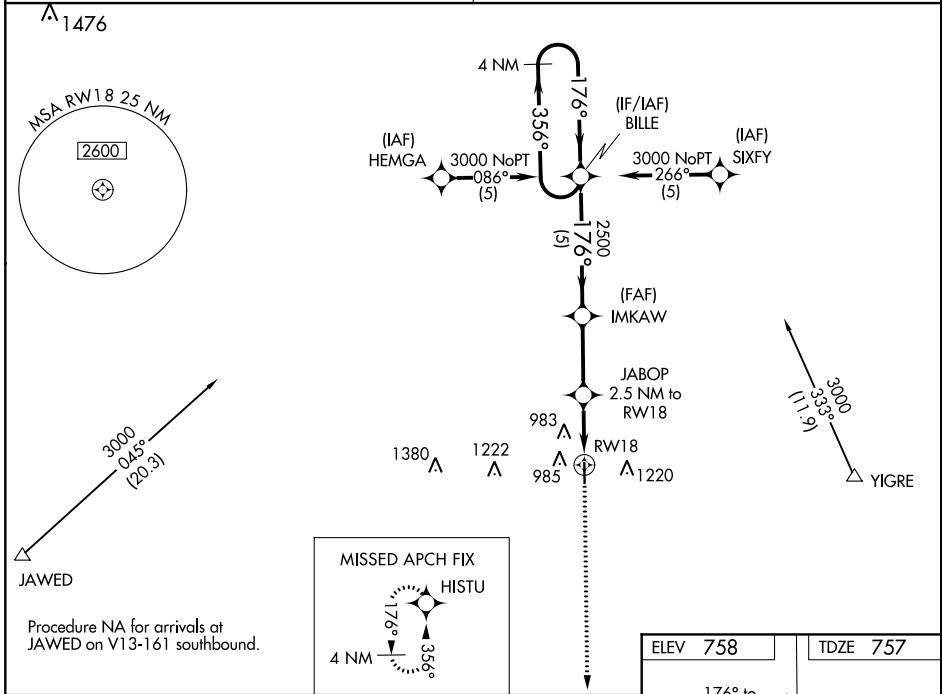
RNAV (GPS) RWY 18

TRENTON MUNI (TRX)

▼ Baro-VNAV NA. Use Chillicothe altimeter setting, when not received, use Kirksville altimeter setting and increase all DA 93 feet and all MDA 100 feet. Increase LPV visibility $\frac{3}{8}$ mile all Cats and LNAV/VNAV $\frac{1}{4}$ all Cats. DME/DME RNP-0.3 NA.
▲ NA Helicopter visibility reduction below $\frac{3}{4}$ SM NA.

MISSED APPROACH: Climb to 3000 direct HISTU and hold.

KANSAS CITY CENTER 125.25 235.975	UNICOM 122.8 (CTAF) 0
---	---------------------------------



CATEGORY	A	B	C	D
LPV DA	1098-1 $\frac{1}{8}$	341 (400-1 $\frac{1}{8}$)		NA
LNAV/VNAV DA	1248-1 $\frac{3}{4}$	491 (500-1 $\frac{3}{4}$)		NA
LNAV MDA	1180-1	423 (500-1)		NA
CIRCLING	1340-1	582 (600-1)		NA

NC-3, 18 JUL 2019 to 15 AUG 2019

NC-3, 18 JUL 2019 to 15 AUG 2019