

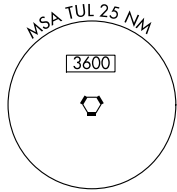
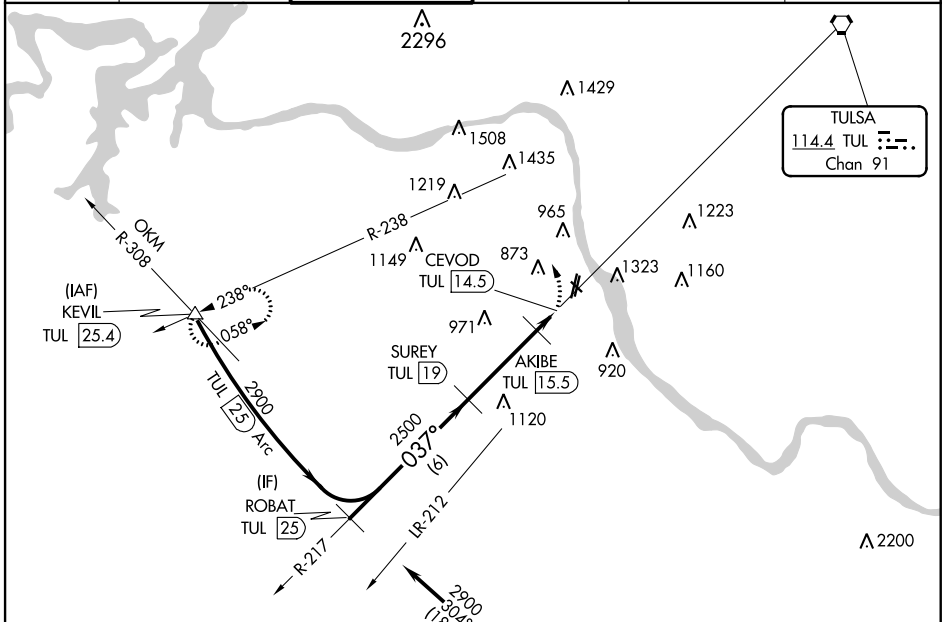
VORTAC TUL 114.4 Chan 91	APP CRS 037°	Rwy Idg TDZE Apt Elev N/A N/A 638
--	------------------------	---

VOR/DME-A
RICHARD LLOYD JONES JR. (RVS)

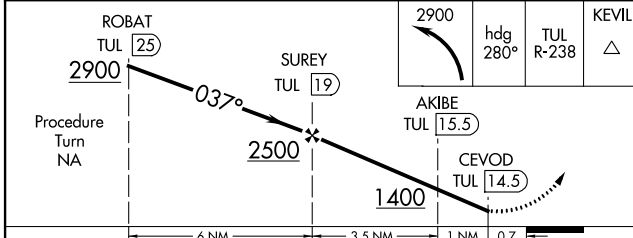
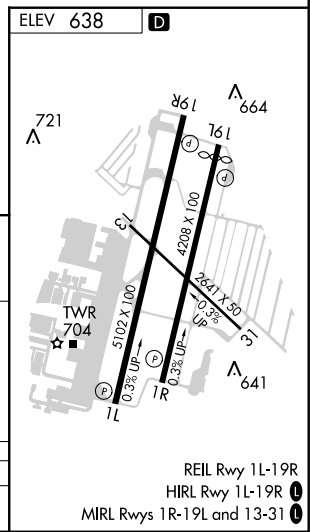
⚠ When local altimeter setting not received, use Tulsa Intl altimeter setting and increase MDA 40 feet; increase Cat C/D visibilities ¼ mile. Circling NA northeast of Rwy 31 and 19L. Circling Rwy 13 NA at night. Rwy 13 Helicopter visibility reduction below 1 SM NA.

MISSED APPROACH: Climbing left turn to 2900 via heading 280° and TUL R-238 to KEVIL Int/TUL 25.4 DME and hold.

ATIS 126.5	TULSA APP CON 134.7	RIVERSIDE TOWER* 120.3 (CTAF) 0	GND CON 121.7	CLNC DEL 124.5	UNICOM 122.95
----------------------	-------------------------------	--	-------------------------	--------------------------	-------------------------



IAF
OKMULGEE
114.9 OKM
Chan 96



CATEGORY	A	B	C	D
CIRCLING	1260-1 622 (700-1)	1280-1 642 (700-1)	1280-1 ¾ 642 (700-1 ¾)	1280-2 642 (700-2)

REIL Rwy 11L-19R
HIRL Rwy 11L-19R **0**
MIRL Rwys 1R-19L and 13-31 **0**

SC-1, 18 JUL 2019 to 15 AUG 2019

SC-1, 18 JUL 2019 to 15 AUG 2019