

WAAS CH 86833 W17A	APP CRS 173°	Rwy Idg TDZE Apt Elev	5701 2918 2918
--	------------------------	-----------------------------	---

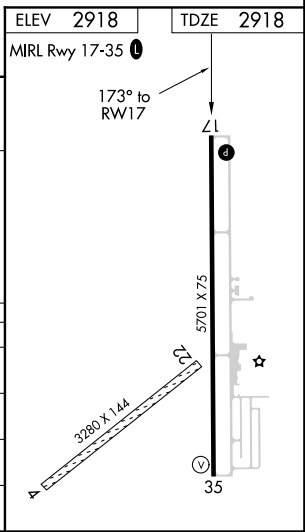
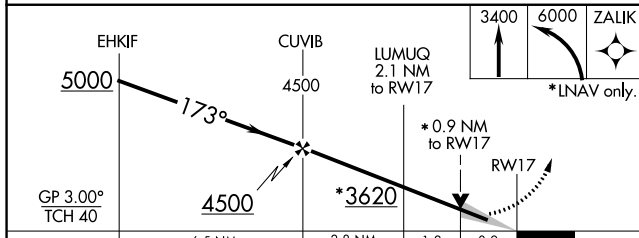
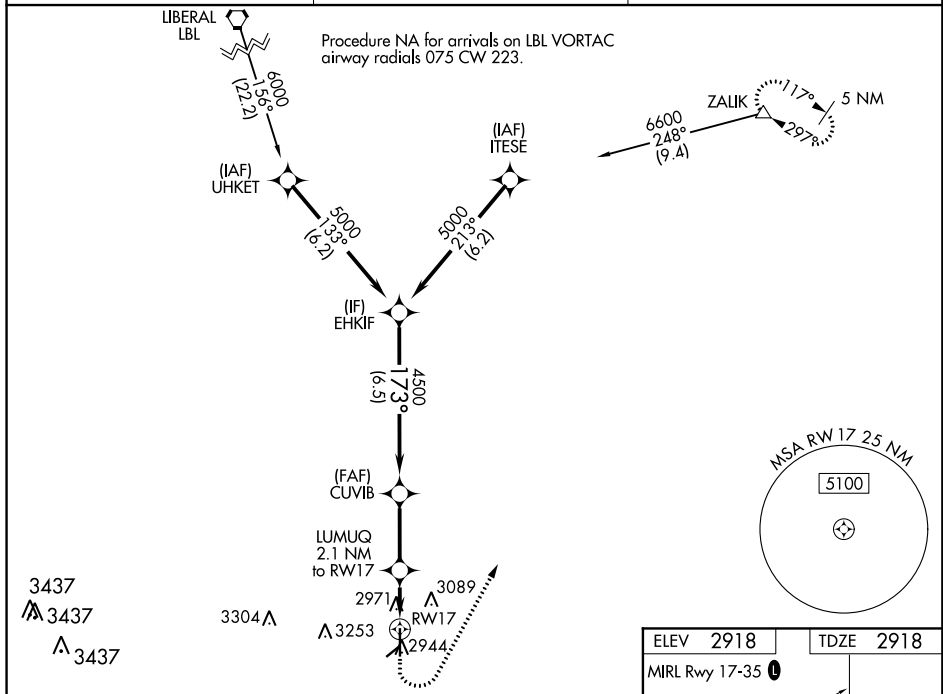
RNAV (GPS) RWY 17

PERRYTON OCHILTREE COUNTY (PYX)

⚠ Baro-VNAV and VDP NA when using Gage altimeter setting. For uncompensated Baro-VNAV systems, LNAV-VNAV NA below -20°C (-4°F) or above 54°C (130°F). When local altimeter setting not received, use Gage altimeter setting and increase all DAs 208 feet and MDAs 220 feet; increase LPV and LNAV/VNAV Cats A and B visibility ¾ mile and Circling Cat B visibility ¼ mile. DME/DME RNP-0.3 NA. Circling NA to Rwy's 4 and 22.

MISSED APPROACH: Climb to 3400 then climbing left turn to 6000 direct ZALIK and hold.

AWOS-3 118.175	KANSAS CITY CENTER 126.95 379.2	UNICOM 122.8 (CTAF) 0
--------------------------	---	---------------------------------



CATEGORY	A	B	C	D
LPV DA	3168-7/8	250 (300-7/8)		NA
LNAV/VNAV DA	3168-7/8	250 (300-7/8)		NA
LNAV MDA	3240-1	322 (400-1)		NA
C CIRCLING	3300-1 382 (400-1)	3580-1 662 (700-1)		NA

SC-2, 18 JUL 2019 to 15 AUG 2019

SC-2, 18 JUL 2019 to 15 AUG 2019