

# ZAAPA TWO DEPARTURE (RNAV)

EC-2, 18 JUL 2019 to 15 AUG 2019

**TOP ALTITUDE:**  
14000

ATIS 125.25  
CLNC DEL 339.8  
121.9 (when tower closed)  
GND CON 121.9 339.8  
LAKEFRONT TOWER \*  
124.3 (CTAF) 339.8  
CLEVELAND DEP CON  
125.35 346.325

**TAKEOFF MINIMUMS:**

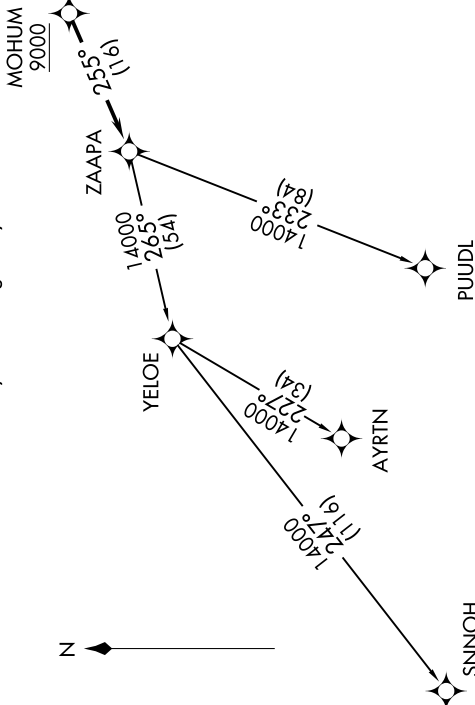
Rwys 6L/R, 24R: Standard with a minimum climb of 500' per NM to 1100.  
Rwy 24L: 400-1 $\frac{3}{4}$  or standard with minimum climb of 757' per NM to 1000.

NOTE: RADAR required.

NOTE: RNAV 1.

NOTE: DME/DME/IRU or GPS required.

NOTE: PUIJL TRANSITION: For aircraft at or below FL220 only or as assigned by ATC.



NOTE: Chart not to scale.

**DEPARTURE ROUTE DESCRIPTION**

**TAKEOFF RUNWAY 6L/R:** Climb on heading 066° to 1100, then on heading 350° or as assigned by ATC for RADAR vectors to cross MOHUM at or above 9000, thence....  
**TAKEOFF RUNWAY 24L/R:** Climb on heading 246° to 1100, then right turn heading 350° or as assigned by ATC for RADAR vectors to cross MOHUM at or above 9000, thence....

...on track 255° to ZAAPA, then on (transition).  
Maintain 14000, expect higher filed altitude ten minutes after departure.

**AYRTN TRANSITION (ZAAPA2.AYRTN)**  
**PUIJL TRANSITION (ZAAPA2.PUIJL)**  
**SNNOH TRANSITION (ZAAPA2.SNNOH)**

EC-2, 18 JUL 2019 to 15 AUG 2019

# ZAAPA TWO DEPARTURE (RNAV)