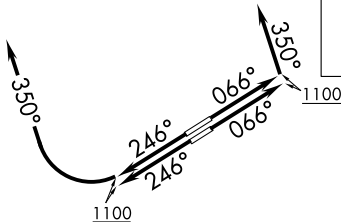


CAVVS TWO DEPARTURE (RNAV)

ATIS 125.25
CLNC DEL
339.8
121.9 (when tower closed)
GND CON 121.9 339.8
LAKEFRONT TOWER *
124.3 (CTAF) 339.8
CLEVELAND DEP CON
125.35 346.325

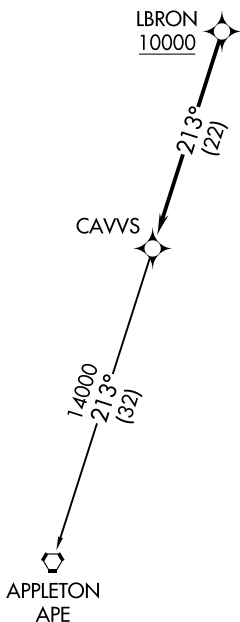
**TOP ALTITUDE:
14000**



NOTE: RADAR required.
NOTE: RNAV 1.
NOTE: DME/DME/IRU or GPS required.

TAKEOFF MINIMUMS:

Rwys 6L/R, 24R: Standard with a minimum climb of 500' per NM to 1100.
Rwy 24L: 400-1³/₈ or standard with minimum climb of 757' per NM to 1000.



DEPARTURE ROUTE DESCRIPTION

TAKEOFF RUNWAYS 6L/R: Climb on heading 066° to 1100, then on heading 350° or as assigned by ATC for RADAR vectors to cross LBRON at or above 10000, thence....

TAKEOFF RUNWAYS 24L/R: Climb on heading 246° to 1100, then right turn heading 350° or as assigned by ATC for RADAR vectors to cross LBRON at or above 10000, thence....

....on track 213° to CAVVS, then on (transition). Maintain 14000, expect filed altitude ten minutes after departure.

APPLETON TRANSITION (CAVVS2.APE)

NOTE: Chart not to scale.

CAVVS TWO DEPARTURE (RNAV)