

WAAS CH <b>40307</b> <b>W33A</b>	APP CRS <b>326°</b>	Rwy ldg TDZE Apt Elev	<b>6997</b> <b>14</b> <b>21</b>
--	------------------------	-----------------------------	---------------------------------------

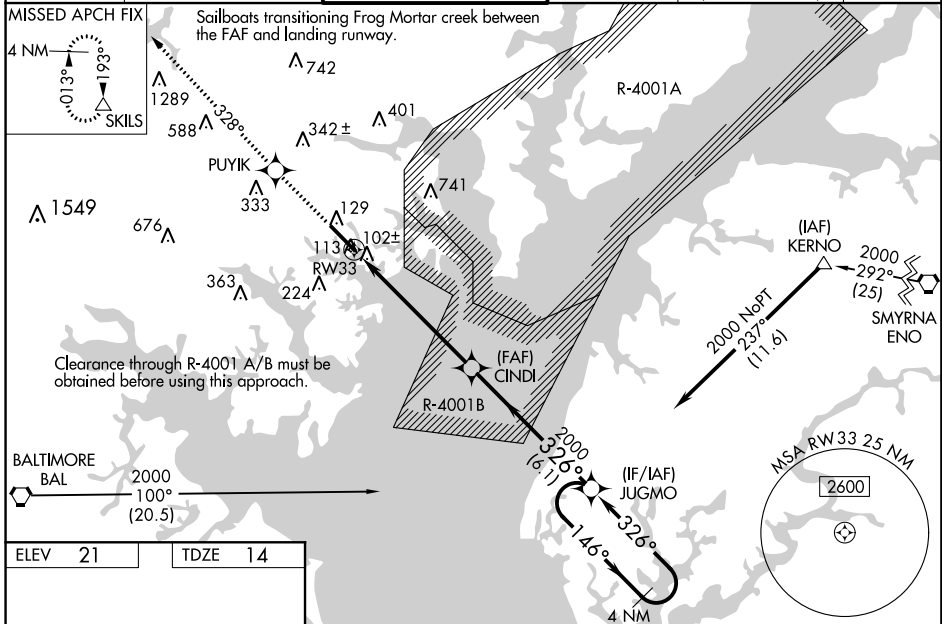
# RNAV (GPS) RWY 33

MARTIN STATE (MTN)

**▼** Baro-VNAV NA when using Baltimore/Washington Intl Thurgood Marshall altimeter setting.  
**▲** For uncompensated Baro-VNAV systems, LNAV/VNAV NA below -15°C (5°F) or above 49°C (120°F). DME/DME RNP-0.3 NA. Helicopter visibility reduction below 1 SM NA. When local altimeter setting not received, use Baltimore/Washington Intl Thurgood Marshall altimeter setting and increase all DA to 454 and all MDA 60 feet, and increase LPV and LNAV/VNAV all Cats visibility to 1½ and LNAV Cat C to 1¼ and Circling Cat D visibility to 2¼.

MISSED APPROACH: Climb to 3000 direct PUYIK and on track 328° to SKILS and hold.

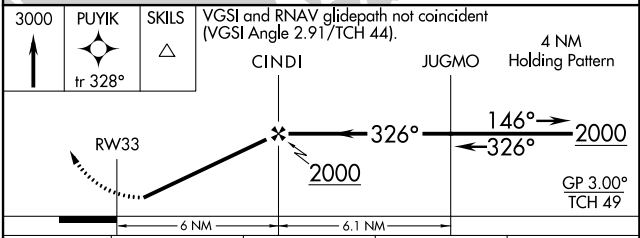
ATIS <b>124.925</b>	POTOMAC APP CON <b>119.0 282.275</b>	MARTIN TOWER ★ <b>121.3(CTAF) 0 254.425</b>	GND CON <b>121.8 253.4</b>	POTOMAC CLNC DEL <b>121.8</b> (when twr closed)	UNICOM <b>122.95</b>
------------------------	---	--	-------------------------------	---	-------------------------



ELEV 21	TDZE 14
---------	---------

HIRL Rwy 15-33  
 REIL Rws 15 and 33  
 Rwy 33 ldg 8100'  
 (Military Operations Only)  
 Rwy 15 take-off 8100'  
 (Military Operations Only)

326° to RW33



CATEGORY	A	B	C	D
LPV DA		402-1¼	388 (400-1¼)	
LNAV/VNAV DA		402-1¼	388 (400-1¼)	
LNAV MDA		380-1	366 (400-1)	380-1¼ 366 (400-1¼)
CIRCLING	540-1	519 (600-1)	540-1½ 519 (600-1½)	680-2 659 (700-2)

NE-3, 18 JUL 2019 to 15 AUG 2019

NE-3, 18 JUL 2019 to 15 AUG 2019