

LOC/DME I-MTN 110.7 Chan 44	APP CRS 326°	Rwy Idg TDZE Apt Elev	6997 14 21
---	------------------------	-----------------------------	---------------------------------------

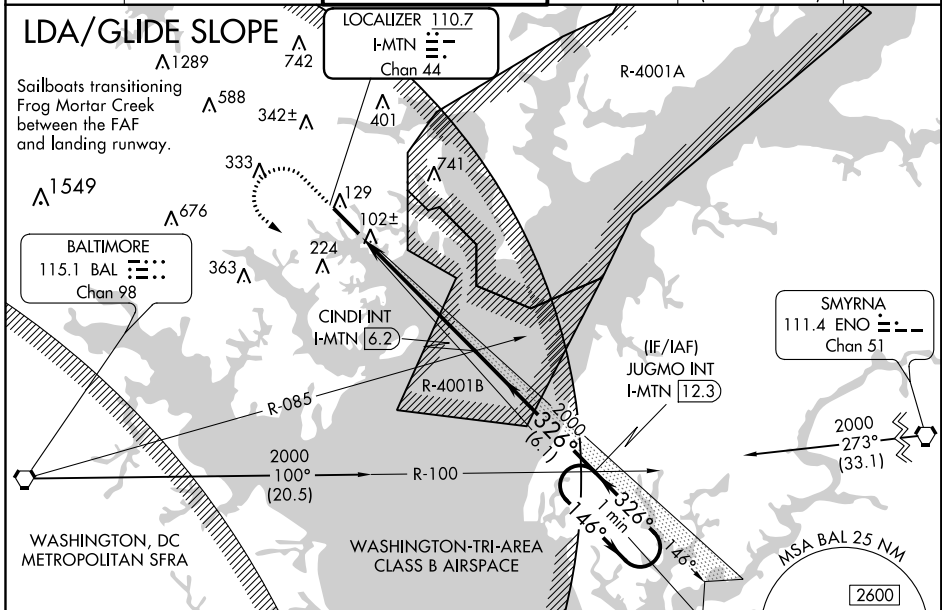
LDA RWY 33

MARTIN STATE (MTN)

▼ RADAR Required. Helicopter visibility reduction below 1 SM NA.
▲ When local altimeter setting not received, use Baltimore/Washington Intl Thurgood Marshall altimeter setting and raise all MDA 60 feet and raise S-LDA 33 Cat C and Circling Cat D visibility ¼ mile.

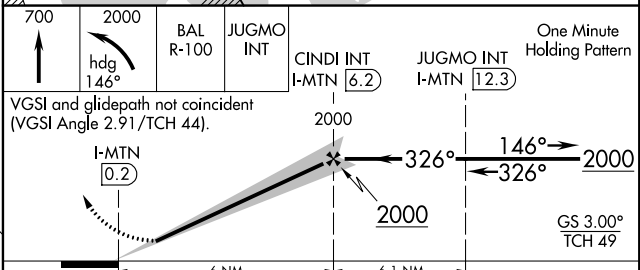
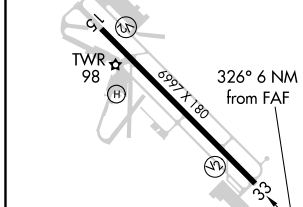
MISSED APPROACH: Climb to 700 then climbing left turn to 2000 on heading 146° and BAL VORTAC R-100 to JUGMO INT/12.3 DME and hold.

ATIS 124.925	POTOMAC APP CON 119.0 282.275	MARTIN TOWER ★ 121.3 (CTAF) 0 254.425	GND CON 121.8 253.4	POTOMAC CLNC DEL 121.8 (when twr closed)	UNICOM 122.95
------------------------	---	---	-------------------------------	---	-------------------------



ELEV 21	TDZE 14
----------------	----------------

Note: Clearance through R-4001 A/B must be obtained before using this approach.



FAF to MAP 6 NM	Knots	60	90	120	150	180
	Min:Sec	6:00	4:00	3:00	2:24	2:00
CATEGORY	A	B	C	D		
S-LDA/GS 33	264-1		250 (300-1)			
S-LDA 33	380-1		366 (400-1)		380-1¼ 366 (400-1¼)	
CIRCLING	540-1		519 (600-1)		540-1½ 519 (600-1½)	
					680-2 659 (700-2)	

NE-3, 18 JUL 2019 to 15 AUG 2019

NE-3, 18 JUL 2019 to 15 AUG 2019