

WAAS CH 50311 W05A	APP CRS 050°	Rwy Idg TDZE Apt Elev	3999 1906 1915
--	------------------------	-----------------------------	---

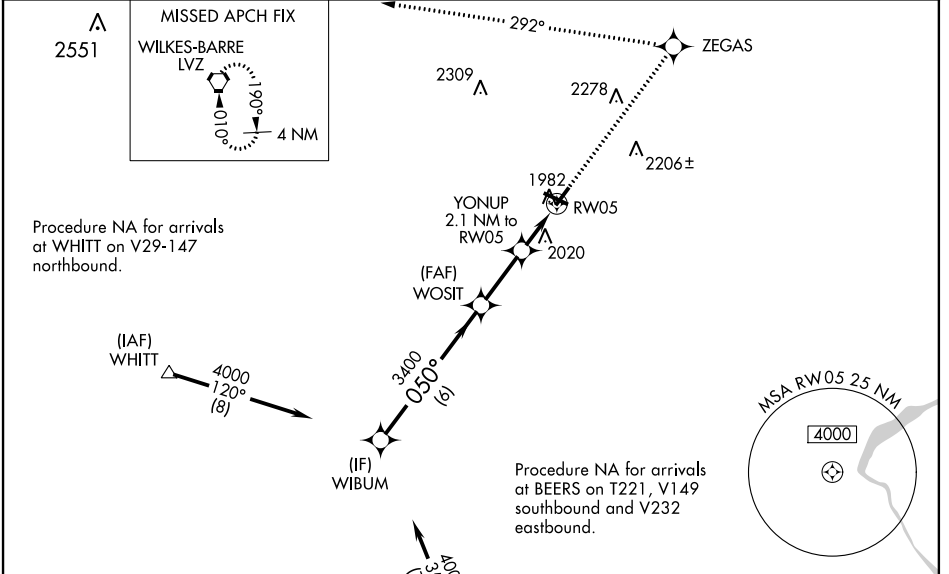
RNAV (GPS) RWY 5

POCONO MOUNTAINS MUNI (MPO)

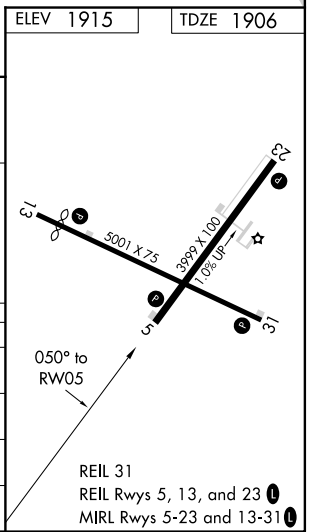
⚠ Baro-VNAV NA when using Wilkes-Barre/Scranton altimeter setting. For uncompensated Baro-VNAV systems, LNAV/VNAV NA below -18°C (0°F) or above 45°C (113°F).
⚠ DME/DME RNP-0.3 NA. Rwy 5 helicopter visibility reduction below ¾ SM NA. When local altimeter setting not received, use Wilkes-Barre/Scranton altimeter setting: increase LPV DA to 2339 feet, LNAV/VNAV DA to 2431 feet and all visibilities ¼ SM; increase all MDAs 180 feet and visibility Cat C and D ½ SM. Circling Rwy 23 NA at night.

MISSED APPROACH: Climb to 4000 direct ZEGAS and left turn via 292° track to LVZ VORTAC and hold.

ASOS 120.275	WILKES-BARRE APP CON 126.3 256.7	CLNC DEL 125.3	UNICOM 122.7 (CTAF) 0
------------------------	--	--------------------------	---------------------------------



Procedure Turn NA	VGS1 and RNAV glidepath not coincident. (VGS1 Angle 4.00/TCH 43).		4000 ZEGAS	LVZ
	WIBUM		292° tr	
GP 3.00° TCH 60	4000	050°	WOSIT	YONUP 2.1 NM to RW05
		3400	*2600	RW05
	6 NM	2.4 NM	2.1 NM	
CATEGORY	A	B	C	D
LPV DA		2160-1	254 (300-1)	
LNAV/VNAV DA		2252-1¼	346 (400-1¼)	
LNAV MDA	2320-1	414 (500-1)	2320-1¼	414 (500-1¼)
C CIRCLING	2480-1 565 (600-1)	2500-1 585 (600-1)	2600-2 685 (700-2)	2660-2½ 745 (800-2½)



NE-4, 18 JUL 2019 to 15 AUG 2019

NE-4, 18 JUL 2019 to 15 AUG 2019