

WAAS CH <b>72640</b> <b>W20A</b>	APP CRS <b>200°</b>	Rwy Idg TDZE Apt Elev	<b>8650</b> <b>5600</b> <b>5622</b>
--	------------------------	-----------------------------	---

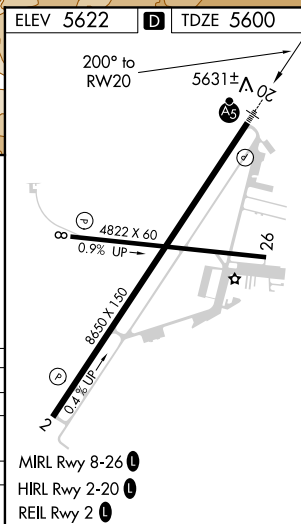
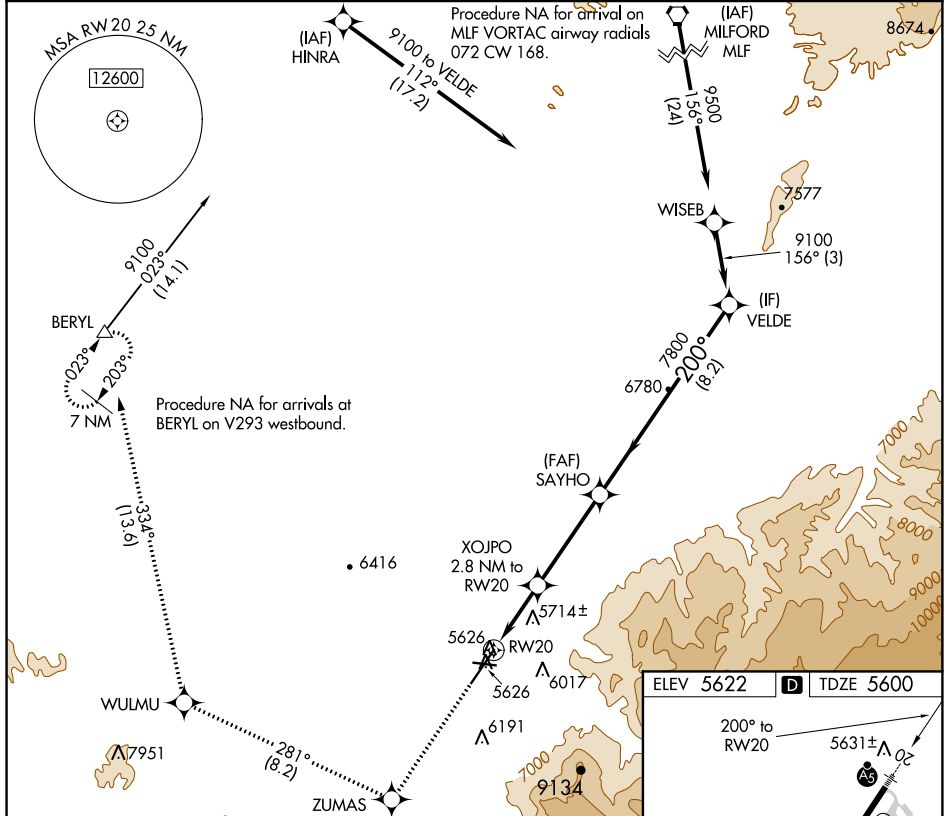
# RNAV (GPS) RWY 20

CEDAR CITY RGNL (CDC)

For uncompensated Baro-VNAV systems, LNAV/VNAV NA below -21°C (-5°F) or above 48°C (119°F). Circling NA southeast of Rwy 2-20. DME/DME RNP -0.3 NA. For inop ALS, increase LNAV Cats C/D visibility to 1 1/2 SM.

MALSR MISSED APPROACH: Climb to 9800 direct ZUMAS and on track 281° to WULMU and on track 334° to BERYL and hold.

ASOS <b>119.025</b>	SALT LAKE CITY CENTER <b>125.575 379.275</b>	UNICOM <b>123.0 (CTAF) 0</b>
------------------------	---	---------------------------------



9800	ZUMAS	tr 281°	WULMU	tr 334°	BERYL	VGSI and RNAV glidepath not coincident. (VGSI Angle 3.00/TCH 53).
*LNAV only						VELDE
RW20		*1.7 NM to RW20		XOJPO 2.8 NM to RW20	SAYHO	VELDE
1.7 NM		1.1 NM		4 NM	8.2 NM	
CATEGORY	A	B	C	D		
LPV DA	5820-1/2		220 (200-1/2)			
LNAV/VNAV DA	5978-3/4		378 (400-3/4)			
LNAV MDA	6180-1/2		580 (600-1/2)		6180-1 1/4 580 (600-1 1/4)	
CIRCLING	6180-1 558 (600-1)		6180-1 5/8 558 (600-1 5/8)		6180-2 558 (600-2)	

SW-4, 18 JUL 2019 to 15 AUG 2019

SW-4, 18 JUL 2019 to 15 AUG 2019