

VORTAC MHZ	APP CRS	Rwy Idg	8500
<b>113.2</b>	<b>352°</b>	TDZE	<b>329</b>
Chan <b>79</b>		Apt Elev	<b>346</b>

# VOR/DME or TACAN RWY 34L

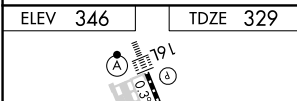
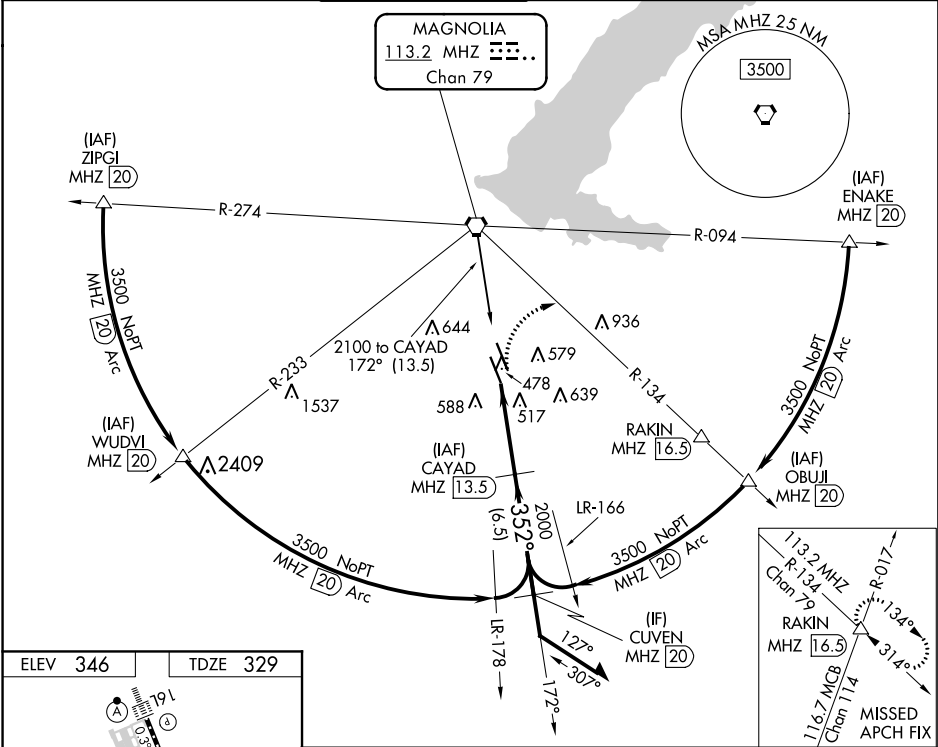
JACKSON-MEDGAR WILEY EVERS INTL (JAN)

**⚠** When local altimeter setting not received, use Hawkins Field altimeter setting and increase all MDA 20 feet; increase S-34L Cats C/D/E visibility 1/8 mile.  
**⚠** Circling NA for Cat E southwest of Rwy 16R-34L. Helicopter visibility reduction below 3/4 SM NA.



**MISSED APPROACH:** Climbing right turn to 3000 on heading 120° and MHZ VORTAC R-134 to RAKIN INT/ MHZ 16.5 DME and hold.

ATIS <b>121.05</b>	JACKSON APP CON* <b>123.9 317.7</b>	JACKSON TOWER* <b>120.9 (CTAF) 352.0</b>	GND CON <b>121.7 348.6</b>	<b>120.7 0*</b>	UNICOM <b>122.95</b>
-----------------------	--	---	-------------------------------	-----------------	-------------------------



ELEV 346	TDZE 329
----------	----------

3000	hdg 120°	RAKIN	MHZ R-134	△
------	----------	-------	-----------	---

CAYAD	MHZ 13.5	Remain within 15 NM
	2100	
	172°	
	352°	
	2000	
	3.05° TCH 55	
	1.4	3.6 NM

CATEGORY	A	B	C	D	E
S-34L	840/55	511 (500-1)	840-1 3/8	511 (500-1 3/8)	
<b>C</b> CIRCLING	880-1	534 (600-1)	900-1 1/2 554 (600-1 1/2)	960-2 614 (700-2)	1040-2 1/2 694 (700-2 1/2)

SC-4, 18 JUL 2019 to 15 AUG 2019

SC-4, 18 JUL 2019 to 15 AUG 2019