

WAAS CH <b>45811</b> <b>W34B</b>	APP CRS <b>339°</b>	Rwy ldg TDZE <b>346</b> Apt Elev <b>346</b>	<b>8500</b> <b>346</b>
--	------------------------	---	---------------------------

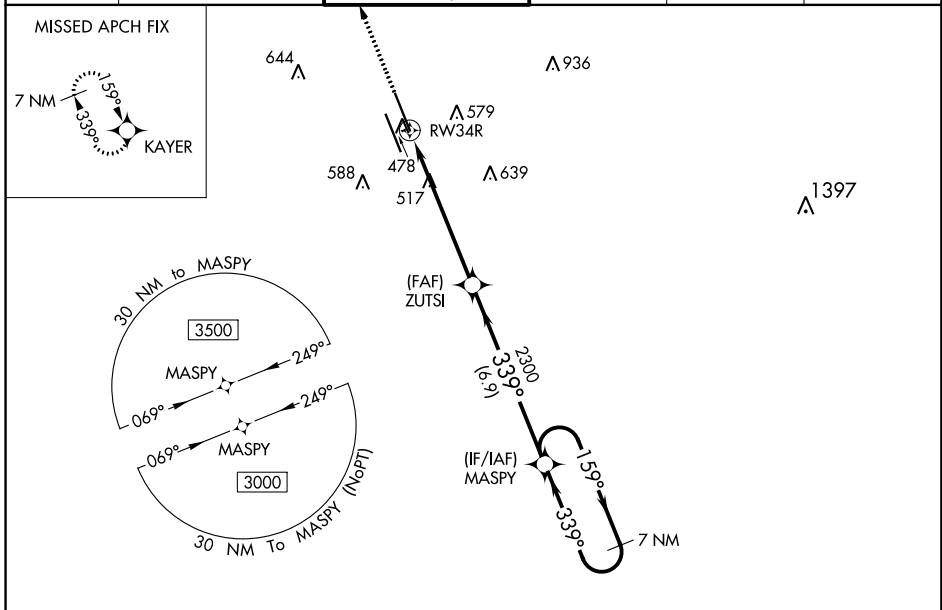
# RNAV (GPS) RWY 34R

JACKSON-MEDGAR WILEY EVERS INTL (JAN)

**⚠** For uncompensated Baro-VNAV systems, LNAV/VNAV NA below -7°C (20°F) or above 54°C (130°F). Circling NA for Cat E southwest of Rwy 16R-34L. DME/DME RNP-0.3 NA. When local altimeter setting not received, use Hawkins Field altimeter setting and increase all DA 19 feet and all MDA 20 feet, increase LPV all Cats visibility to RVR 5100, LNAV/VNAV all Cats visibility to 1 3/4 SM and LNAV Cats C/D/E visibility to 1 1/2 SM. VDP and Baro-VNAV NA when using Hawkins Field altimeter setting. Helicopter visibility reduction below 3/4 SM NA.

**MISSED APPROACH:** Climb to 3000 direct KAYER and hold.

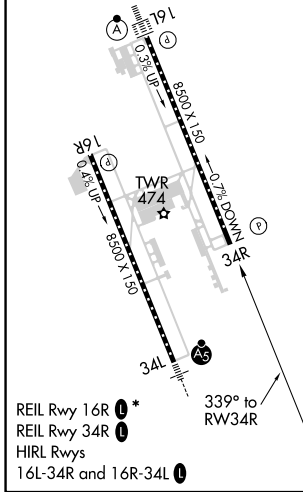
ATIS <b>121.05</b>	JACKSON APP CON * <b>123.9 317.7</b>	JACKSON TOWER * <b>120.9</b> (CTAF) <b>0 352.0</b>	GND CON <b>121.7 348.6</b>	<b>120.7 0*</b>	UNICOM <b>122.95</b>
-----------------------	---	---	-------------------------------	-----------------	-------------------------



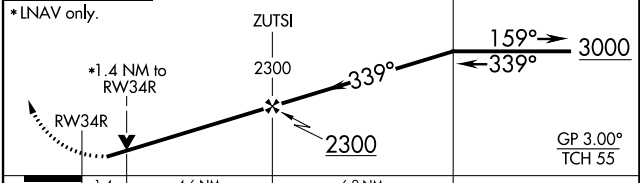
SC-4, 18 JUL 2019 to 15 AUG 2019

SC-4, 18 JUL 2019 to 15 AUG 2019

ELEV <b>346</b>	TDZE <b>346</b>
-----------------	-----------------



**3000** **KAYER** VGSI and RNAV glidepath not coincident (VGSI Angle 3.00/TCH 66).



CATEGORY	A	B	C	D	E
LPV DA	646/47 300 (300-1)				
LNAV/VNAV DA	846-1 5/8 500 (500-1 5/8)				
LNAV MDA	860/55	514 (600-1)	860-1 3/8	514 (600-1 3/8)	
<b>C</b> CIRCLING	880-1	534 (600-1)	900-1 1/2 554 (600-1 1/2)	960-2 614 (700-2)	1040-2 1/2 694 (700-2 1/2)