

LOC I-JAN 110.5	APP CRS 159°	Rwy Idg 8500
		TDZE 312
		Apt Elev 346

ILS RWY 16L (SA CAT I)

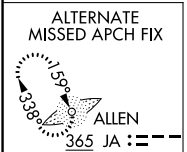
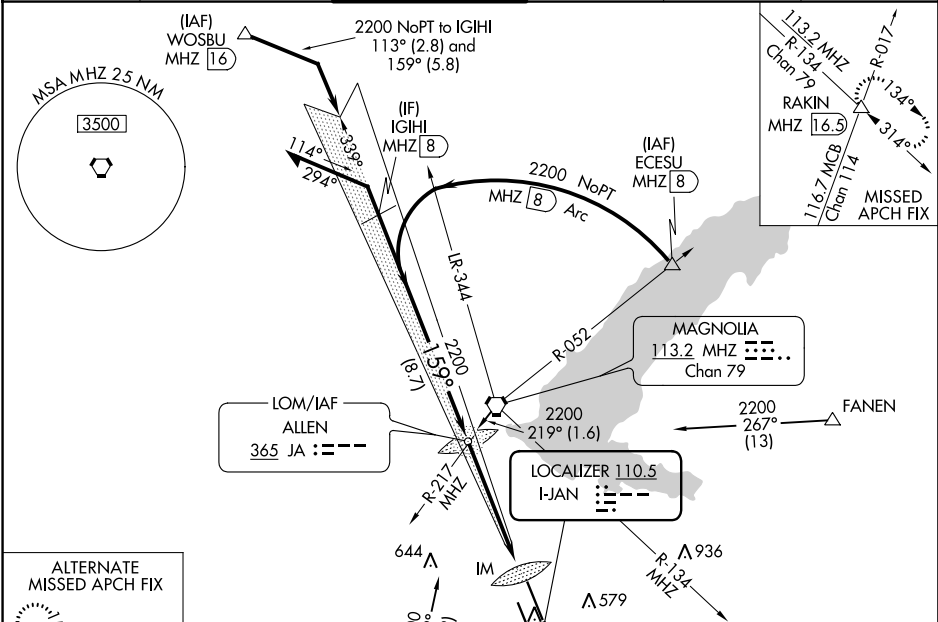
JACKSON-MEDGAR WILEY EVERS INTL (JAN)

⚠ Requires specific OPSPEC, MSPEC, or LOA approval and use of HUD to DA. When control tower closed, procedure NA. When local altimeter setting not received, procedure NA.

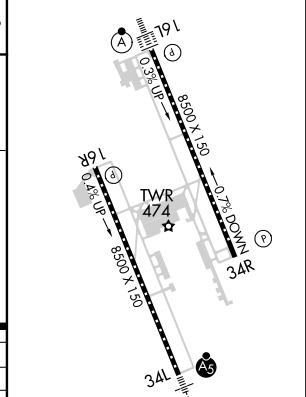
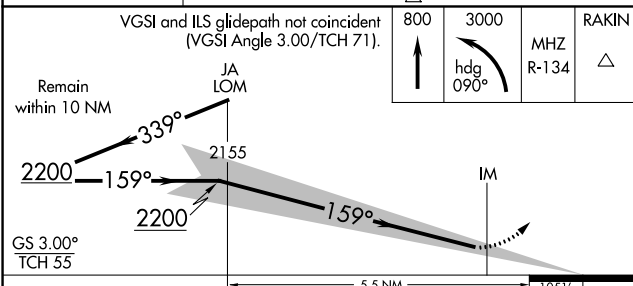


MISSED APPROACH: Climb to 800 then dimbing left turn to 3000 on heading 090° and MHZ VORTAC R-134 to RAKIN INT/MHZ 16.5 DME and hold.

ATIS 121.05	JACKSON APP CON * 123.9 317.7	JACKSON TOWER * 120.9 (CTAF) 0 352.0	GND CON 121.7 348.6	120.7 0 *	UNICOM 122.95
-----------------------	---	--	-------------------------------	------------------	-------------------------



ELEV 346	TDZE 312
----------	----------



CATEGORY	A	B	C	D
S-ILS 16L	RA 169/14 150 DA 462			

SA CATEGORY I ILS - SPECIAL AIRCREW & AIRCRAFT CERTIFICATION REQUIRED

REIL Rwy 16R **1***
REIL Rwy 34R **1**
HIRL Rwy 16L-34R and 16R-34L **1**

SC-4, 18 JUL 2019 to 15 AUG 2019

SC-4, 18 JUL 2019 to 15 AUG 2019