

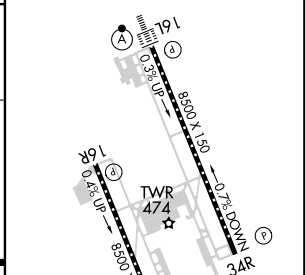
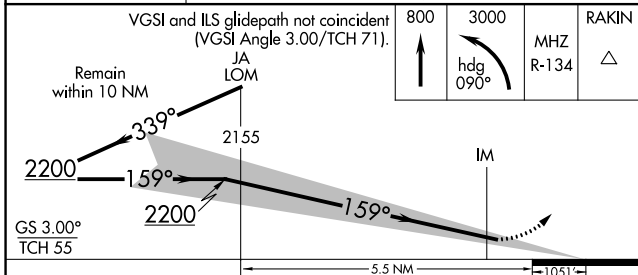
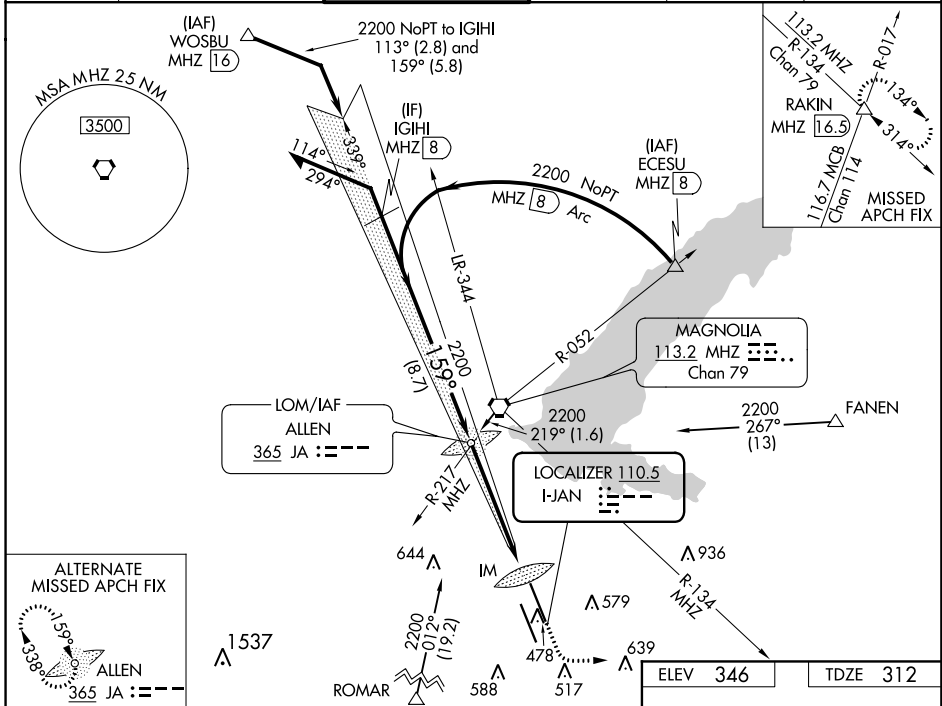
LOC I-JAN 110.5	APP CRS 159°	Rwy Idg TDZE Apt Elev	8500 312 346
---------------------------	------------------------	-----------------------------	---

ILS RWY 16L (CAT II & III)

JACKSON-MEDGAR WILEY EVERS INTL (JAN)

<p>▼ When control tower closed, procedure NA. ▲ When local altimeter setting not received, procedure NA. ASR</p>	<p>ALSF-2</p>	<p>MISSED APPROACH: Climb to 800 then climbing left turn to 3000 on heading 090° and MHz VORTAC R-134 to RAKIN INT/MHZ 16.5 DME and hold.</p>
--	---------------	---

ATIS 121.05	JACKSON APP CON* 123.9 317.7	JACKSON TOWER* 120.9 (CTAF) 0 352.0	GND CON 121.7 348.6	120.7 0*	UNICOM 122.95
-----------------------	--	---	-------------------------------	-----------------	-------------------------



CATEGORY	A	B	C	D
S-ILS 16L		CAT II RA 119/12 100 DA 412		
S-ILS 16L		CAT IIIA RVR 07		
S-ILS 16L		CAT IIIB RVR 06		
S-ILS 16L		CAT IIIC NA		

CATEGORY II & III ILS - SPECIAL AIRCREW & AIRCRAFT CERTIFICATION REQUIRED

REIL Rwy 16R 1*
REIL Rwy 34R 1
HIRL Rwy 16L-34R and 16R-34L 1

SC-4, 18 JUL 2019 to 15 AUG 2019

SC-4, 18 JUL 2019 to 15 AUG 2019