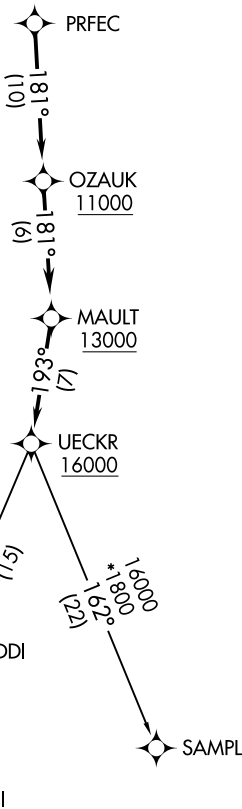


ATIS
118.875
CLNC DEL
121.6
MILWAUKEE CLNC DEL
128.7 (when tower closed)
GND CON
121.6
MILWAUKEE DEP CON
125.35 307.0



**TOP ALTITUDE:
ASSIGNED BY ATC**



TAKEOFF MINIMUMS

Rwys 18, 28, 36: Standard.
Rwy 10: 400-2½ or standard with a minimum climb of 316' per NM to 1400.

- NOTE: RNAV 1.
- NOTE: GPS or DME/DME/IRU required.
- NOTE: RADAR required.
- NOTE: Turbojet aircraft maintain 250K until advised by ATC.
- NOTE: Notify ATC if unable to comply with crossing restrictions.

NOTE: Chart not to scale.

DEPARTURE ROUTE DESCRIPTION

Climb on assigned heading for RADAR vectors to PRFEC, thence. . . .
. . . .on track 181° to cross OZAUK at or above 11000, then on track 181° to cross MAULT at or above 13000, then on track 193° to cross UECKR at or above 16000, then on (transition). Maintain ATC assigned altitude, expect filed altitude ten minutes after departure.

- DELHI TRANSITION (UECKR5.DELHI)
- SAMPL TRANSITION (UECKR5.SAMPL)