


WAAS CH 53411 W10A	APP CRS 103°	Rwy Idg TDZE Apt Elev	5849 901 911
--	------------------------	-----------------------------	---


RNAV (GPS) RWY 10

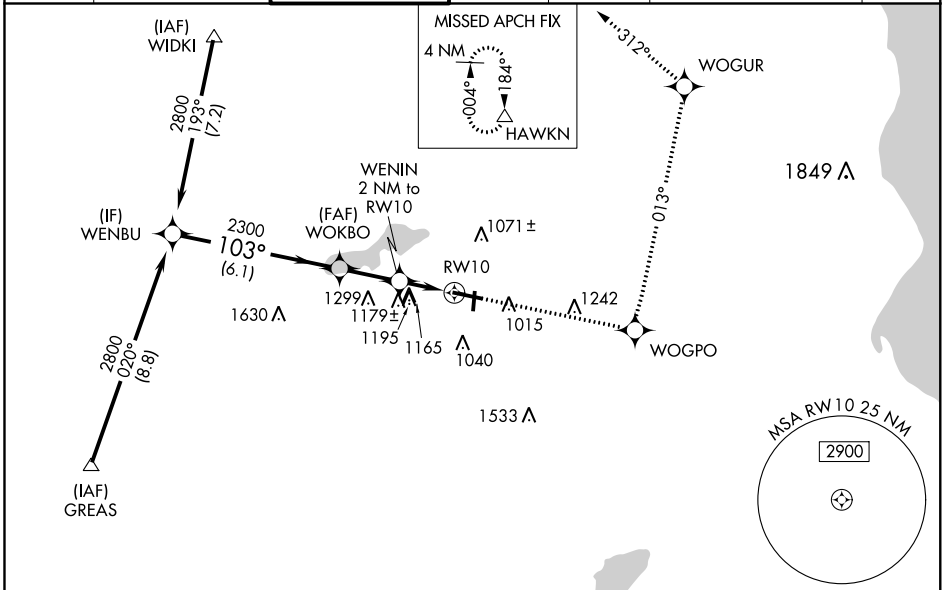
WAUKESHA COUNTY (UES)

⚠ Baro-VNAV NA when using Lawrence J Timmerman altimeter setting. For uncompensated Baro-VNAV systems, LNAV/VNAV NA below -16°C (4°F) or above 54°C (130°F). DME/DME RNP-0.3 NA. When local altimeter setting not received, use Lawrence J Timmerman altimeter setting and increase all DA 46 feet and all MDA 60 feet, increase LNAV/VNAV all Cats visibility ¼ mile; increase Circling Cat D visibility ¼ mile.

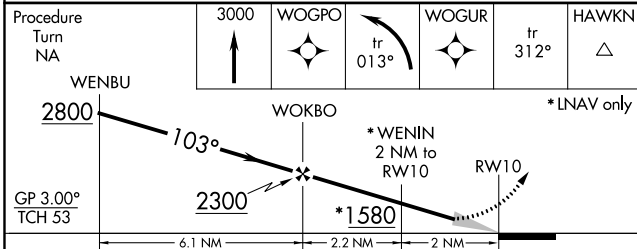
MALS R 

MISSED APPROACH: Climb to 3000 direct WOGPO and left turn on track 013° to WOGUR and track 312° to HAWKN and hold.




ATIS 118.875	MILWAUKEE APP CON 125.35 307.0	WAUKESHA TOWER * 123.7 (CTAF) 	GND CON 121.6	CLNC DEL 121.6	MILWAUKEE CLNC DEL 128.7 (When tower closed)	UNICOM 122.95
------------------------	--	---	-------------------------	--------------------------	--	-------------------------



Procedure NA for arrivals at GREAS via V63 southwest bound.



ELEV 911	TDZE 901
----------	----------

HIRL Rwy 10-28 
 MIRL Rwy 18-36 
 REIL Rwy 18, 28 and 36 

CATEGORY	A	B	C	D
LPV DA		1101-½	200 (200-½)	
LNAV/ VNAV DA		1537-1¾	636 (700-1¾)	
LNAV MDA	1440-½	539 (600-½)	1440-1 539 (600-1)	1440-1¼ 539 (600-1¼)
CIRCLING	1460-1 549 (600-1)	1480-1 569 (600-1)	1520-1¾ 609 (700-1¾)	1600-2¼ 689 (700-2¼)

EC-3, 18 JUL 2019 to 15 AUG 2019

EC-3, 18 JUL 2019 to 15 AUG 2019