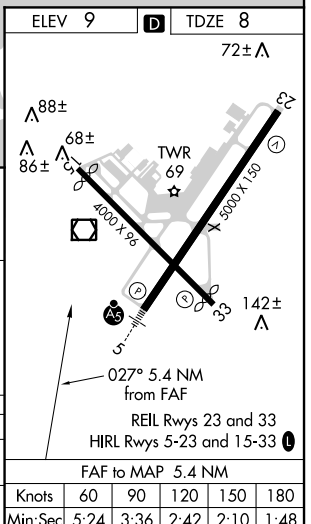
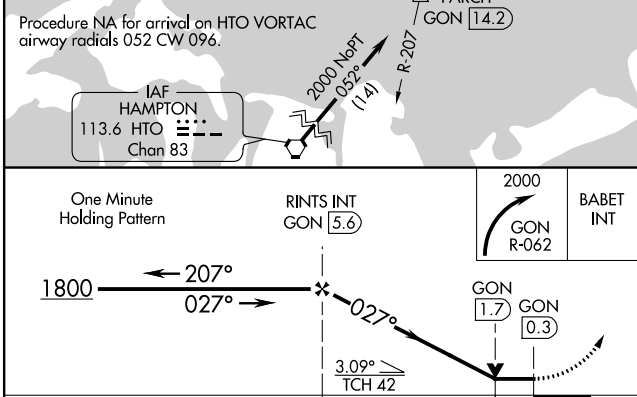
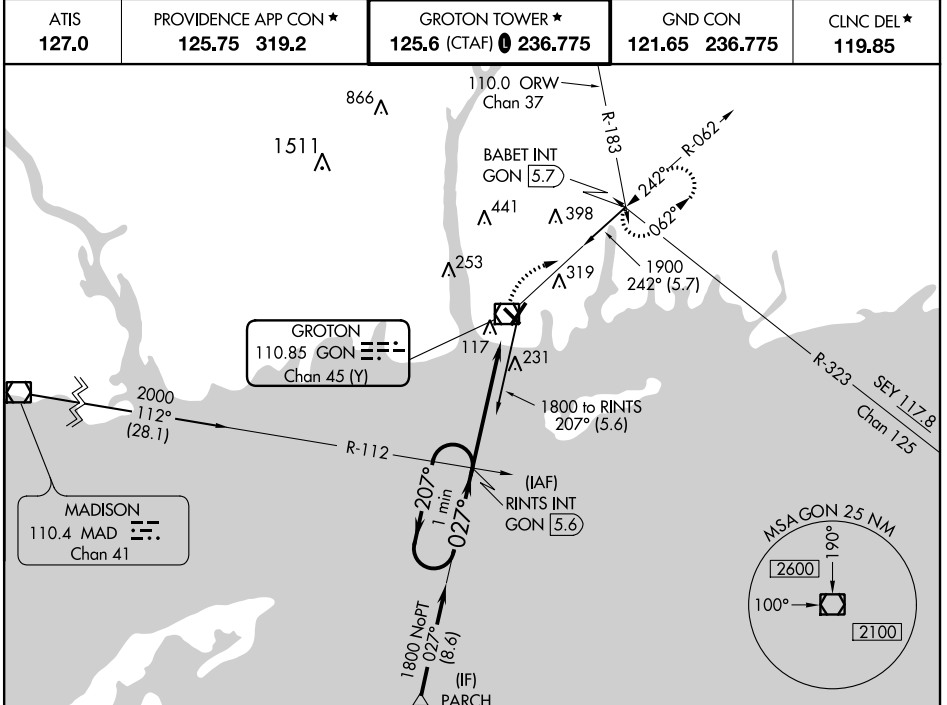


VOR/DME GON <b>110.85</b> Chan 45 (Y)	APP CRS <b>027°</b>	Rwy Idg TDZE Apt Elev <b>5000</b> <b>8</b> <b>9</b>
---	------------------------	--

# VOR RWY 5

GROTON-NEW LONDON (GON)

<p>Inoperative table does not apply to Cat D. Night landing: Rwy 15 NA at night.</p>	<p>MALS R</p>	<p>MISSED APPROACH: Climbing right turn to 2000 via GON R-062 to BABET Int/GON 5.7 DME and hold, continue climb-in-hold to 2000.</p>		
		<p>ATIS <b>127.0</b>    PROVIDENCE APP CON * <b>125.75 319.2</b>    GROTON TOWER * <b>125.6 (CTAF) 236.775</b>    GND CON <b>121.65 236.775</b>    CLNC DEL * <b>119.85</b></p>		



CATEGORY	A	B	C	D
S-5	500/24	492 (500-½)	500/40 492 (500-¾)	500-1½ 492 (500-1½)
CIRCLING	580-1 571 (600-1)	620-1 611 (700-1)	620-1¾ 611 (700-¾)	620-2 611 (700-2)

NE-1, 18 JUL 2019 to 15 AUG 2019