

RNAV (GPS) RWY 34

APCH CRS	Rwy Idg	4702
345°	TDZE	273
	Arpt Elev	273

AL-2334 [USAF]

TIN CITY LRRS (PATC)

▼ Night operations not authorized
DME/DME RNP - 0.3 NA
* Circling not authorized W of runway 16/34

MISSED APPROACH: Climb to 1500 then climbing right turn to 4000 direct JAGMA and hold.

ANCHORAGE CENTER 133.3 290.4	TIN CITY RCO (NOME RADIO) 122.6	UNICOM 126.2 (CTAF)
--	---	-------------------------------

Uncontrolled airspace below 700' AGL within 7 NM of Tin City airport.

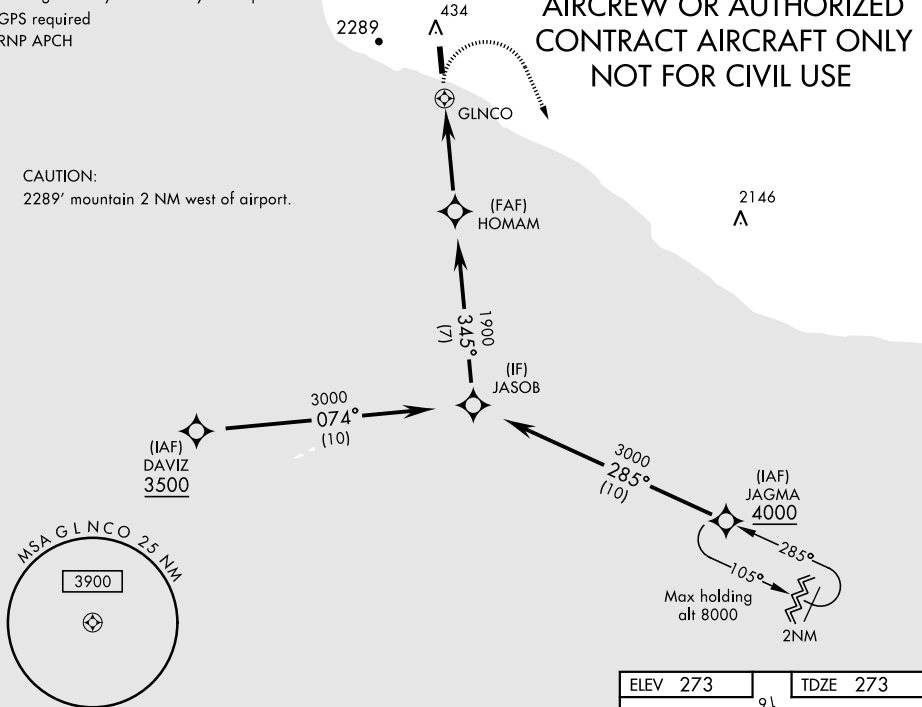
Circling visibility reduction by helicopters NA.

GPS required
RNP APCH

**MILITARY CERTIFIED
AIRCREW OR AUTHORIZED
CONTRACT AIRCRAFT ONLY
NOT FOR CIVIL USE**

CAUTION:

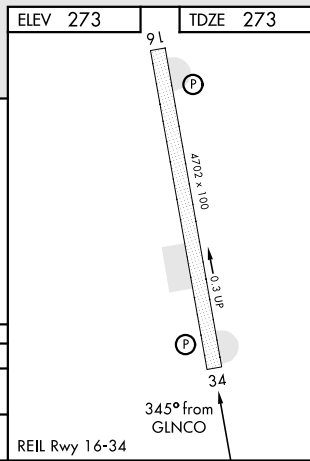
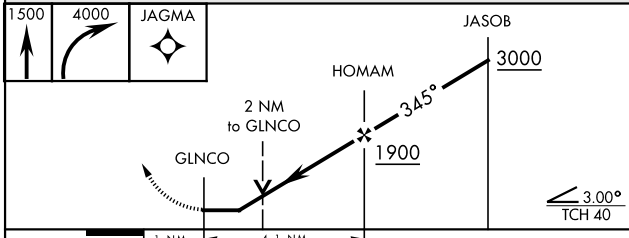
2289' mountain 2 NM west of airport.



AK, 20 JUN 2019 to 15 AUG 2019

AK, 20 JUN 2019 to 15 AUG 2019

EMERG SAFE ALT 100 NM 6800



CATEGORY	A	B	C	D
LNAV MDA	1260-1¼ 987 (1000-1¼)	1260-1½ 987 (1000-1½)	1280-3	1007 (1100-3)
CIRCLING*	1260-1¼ 987 (1000-1¼)	1260-1½ 987 (1000-1½)	1280-3	1007 (1100-3)

REIL Rwy 16-34

RNAV (GPS) RWY 34