

TIN CITY, ALASKA

NDB/DME RWY 34

NDB/DME TNC 347	APCH CRS 339°	Rwy ldg THRE 242	Arpt Elev 273
Chan 119 (Y)			

AL-2334 [USAF]

TIN CITY LRRS (PATC)

▼ * Circling not authorized W of Rwy 16-34.
Night operations not authorized.

MISSED APPROACH: Climbing right turn to 3500 intercept TNC 159° bearing to WNGCO and hold. Continue climb-in-hold to 3500.

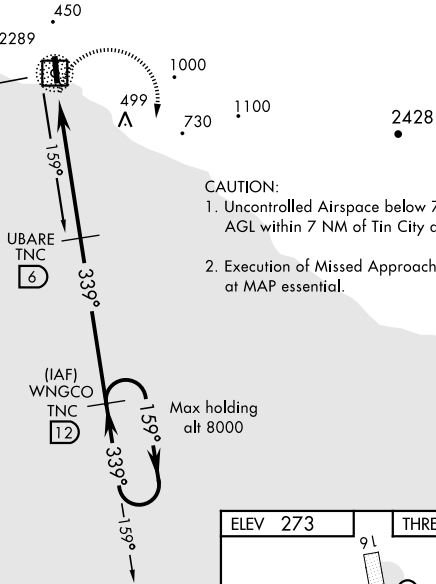
ANCHORAGE CENTER 133.3 290.4	TIN CITY RCO (NOME RADIO) 122.6	UNICOM 126.2 (CTAF)
--	---	-------------------------------

MILITARY CERTIFIED AIRCREWS OR AUTHORIZED CONTRACT AIRCRAFT ONLY

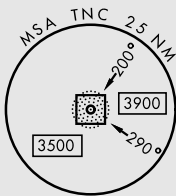
NOT FOR CIVIL USE

CAUTION:
2289' mountain 2 NM West of NDB/DME.

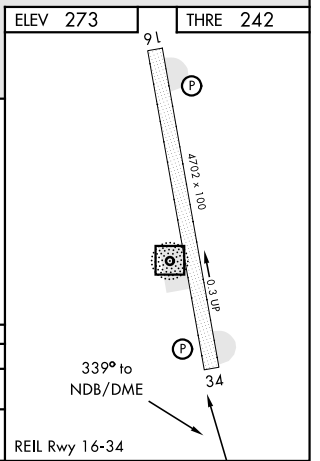
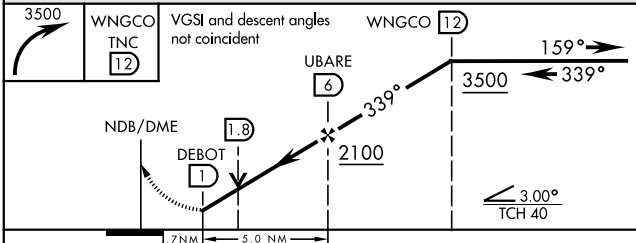
TIN CITY
347 TNC Chan 119(Y)



- CAUTION:
1. Uncontrolled Airspace below 700' AGL within 7 NM of Tin City airport.
 2. Execution of Missed Approach at MAP essential.



EMERG SAFE ALT 100 NM 6800



CATEGORY	A		B		C		D	
S-34	780-1	538 (600-1)	780-1½	538 (600-1½)	780-1½	538 (600-1½)	1120-2¾	847 (900-2¾)
CIRCLING*	780-1	507 (600-1)	780-1½	507 (600-1½)	780-1½	507 (600-1½)	1120-2¾	847 (900-2¾)

TIN CITY, ALASKA
Orig 08JAN15

65°34'N-167°55'W

TIN CITY LRRS (PATC)

NDB/DME RWY 34

AK, 20 JUN 2019 to 15 AUG 2019

AK, 20 JUN 2019 to 15 AUG 2019