

VOR/DME OTZ <b>115.7</b> Chan <b>104</b>	APP CRS <b>084°</b>	Rwy ldg <b>5900</b> TDZE <b>13</b> Apt Elev <b>15</b>
--	------------------------	---

# VOR RWY 9

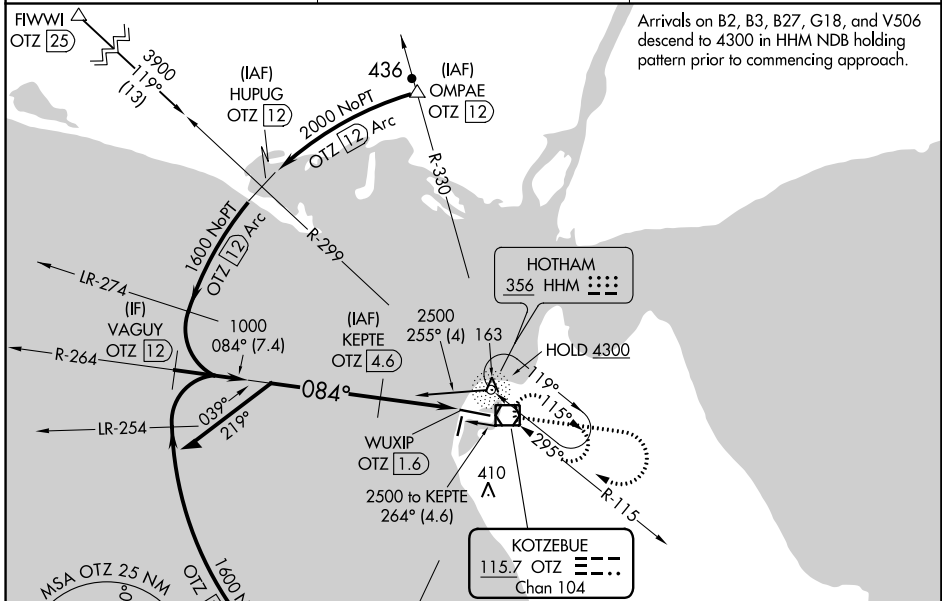
RALPH WIEN MEMORIAL (OTZ) (PAOT)

DME required.

**⚠** Circling Rwy 18, 36 NA at night, Circling Rwy 27 at night, operational VGSi required, remain on or above VGSi glidepath until threshold.  
**⚠** -44°C Rwy 9 helicopter visibility reduction below RVR 4000 NA.

MISSED APPROACH: Climb to 1500 then climbing right turn to 2000 direct OTZ VOR/DME and hold, continue climb-in-hold to 2000.

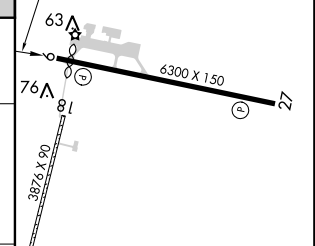
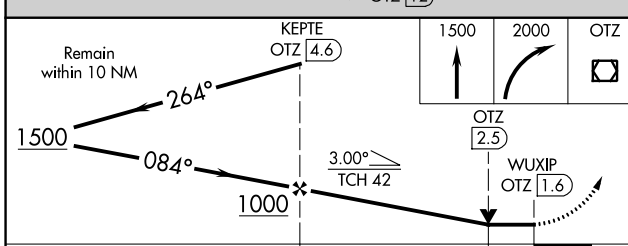
AFIS <b>135.45</b>	ANCHORAGE CENTER <b>119.2 263.0</b>	KOTZEBUE RADIO <b>123.60</b> (CTAF)
-----------------------	--	--



AK, 20 JUN 2019 to 15 AUG 2019

AK, 20 JUN 2019 to 15 AUG 2019

ELEV 15	<b>D</b> TDZE 13
---------	------------------



CATEGORY	A	B	C	D
S-9	340/55 327 (400-1)		340/50 327 (400-1)	
<b>C</b> CIRCLING	520-1 505 (600-1)		720-2 705 (800-2)	720-2 1/4 705 (800-2 1/4)

REIL Rwy 9 and 27 **Ⓛ**  
 HIRL Rwy 9-27 **Ⓛ**  
 MIRL Rwy 18-36 **Ⓛ**

# VOR RWY 9