

LOC/DME I-OTZ 110.7 Chan 44	APP CRS 089°	Rwy Idg TDZE Apt Elev	5900 13 15
---	------------------------	-----------------------------	---------------------------------------

ILS or LOC RWY 9

RALPH WIEN MEMORIAL (OTZ) (PAOT)

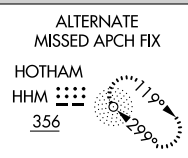
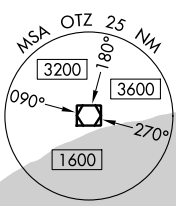
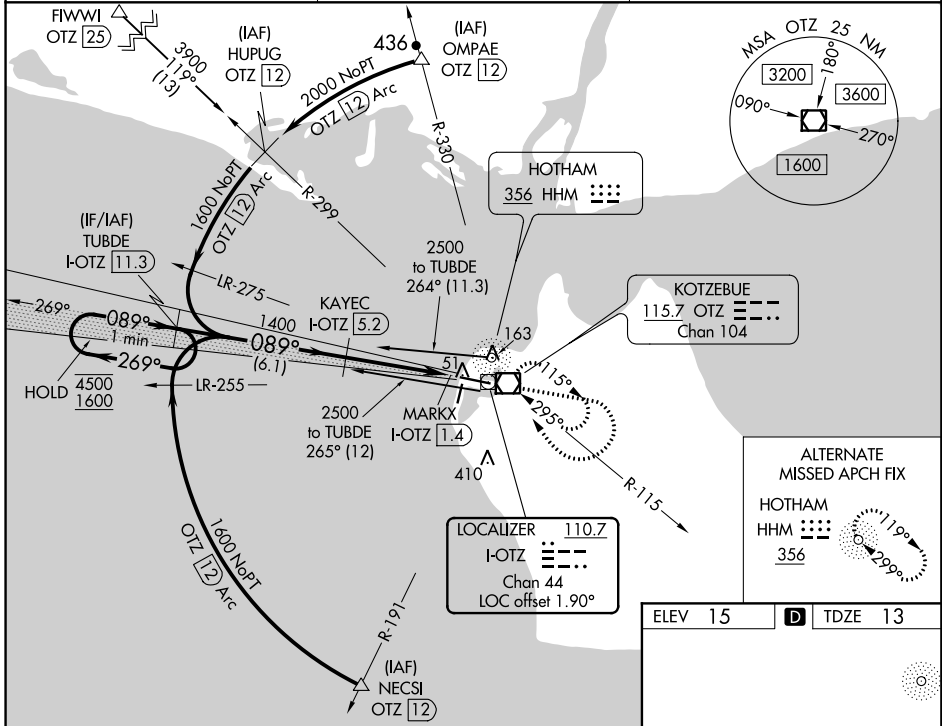
DME required.

⚠ Circling Rwy 18, 36 NA at night, Circling Rwy 27 at night, operational VGSJ required, remain on or above VGSJ glidepath until threshold. Rwy 9 helicopter visibility reduction below RVR 4000 NA.

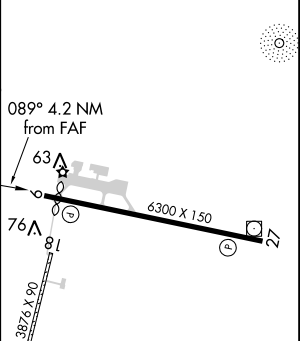
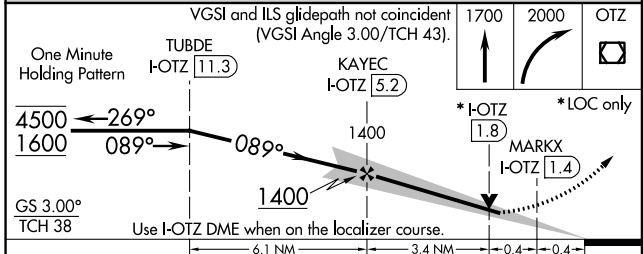
⚠ -44°C

MISSED APPROACH: Climb to 1700 then climbing right turn to 2000 direct OTZ VOR/DME and hold, continue climb-in-hold to 2000.

AFIS 135.45	ANCHORAGE CENTER 119.2 263.0	KOTZEBUE RADIO 123.60 (CTAF)
-----------------------	--	--



ELEV 15	D TDZE 13
---------	------------------



CATEGORY	A	B	C	D
S-ILS 9	263/50		250 (300-1)	
S-LOC 9	320/55	307 (400-1)	320/50	307 (400-1)
C CIRCLING	520-1	505 (600-1)	720-2 705 (800-2)	720-2¼ 705 (800-2¼)

- REIL Rws 9 and 27
- HIRL Rwy 9-27
- MIRL Rwy 18-36

AK, 20 JUN 2019 to 15 AUG 2019

AK, 20 JUN 2019 to 15 AUG 2019