

VORTAC TWF 115.8 Chan 105	APP CRS 077°	Rwy Idg TDZE 4149 Apt Elev 4154	8703 4149 4154
---	------------------------	---	---

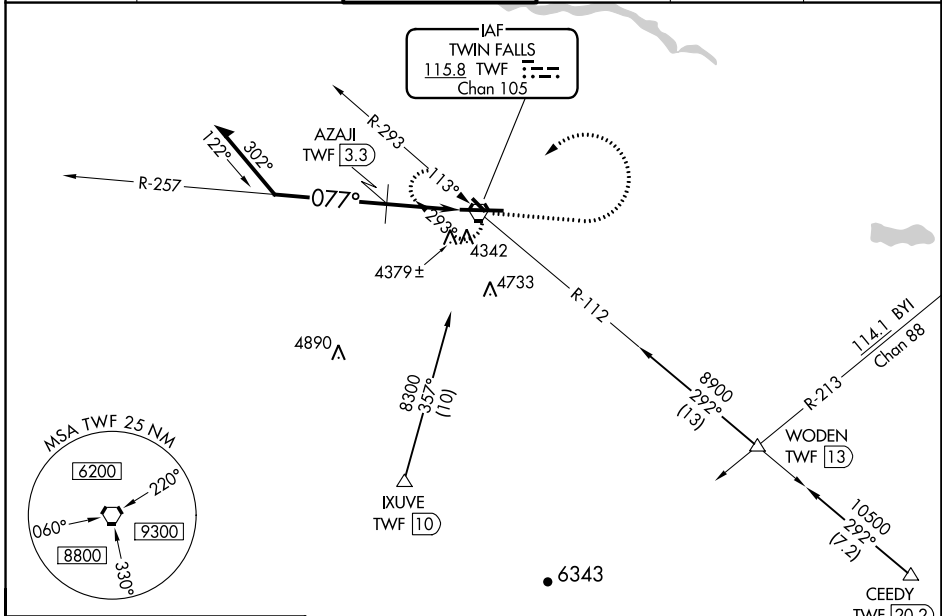
VOR RWY 8

JOSLIN FIELD-MAGIC VALLEY RGNL (TWF')

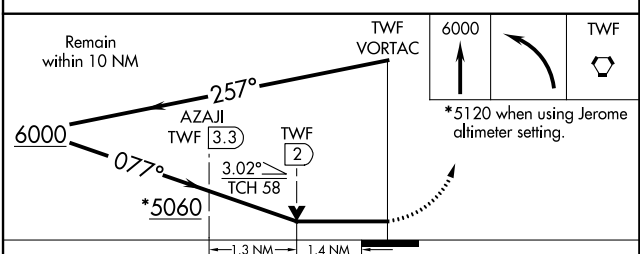
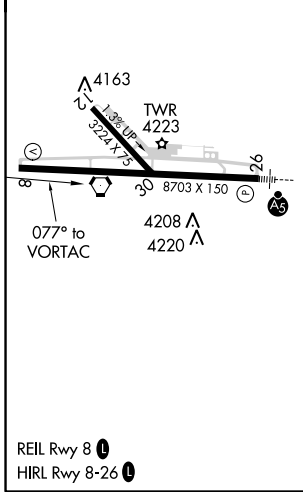
N Night landing: Rwy 30 NA. When local altimeter setting not received, use Jerome altimeter setting and increase all MDA 60 feet and S-8 Cats C and D visibility ½ mile, S-8 Cat B and Circling Cat B and C visibility ¼ mile. Increase AZAJI FIX minimums S-8 Cat C and D and Circling Cat C visibility ¼ mile. VDP NA when using Jerome altimeter setting.

MISSED APPROACH: Climb to 6000 then left turn direct TWF VORTAC and hold.

ASOS 130.025	TWIN FALLS APP CON* 126.7 353.75	TWIN FALLS TOWER* 118.2 (CTAF) 0 317.5	GND CON 121.7	CLNC DEL 123.65	UNICOM 122.95
------------------------	--	--	-------------------------	---------------------------	-------------------------



ELEV 4154	TDZE 4149
-----------	-----------



CATEGORY	A	B	C	D
S-8	5060-1¼	911 (1000-1¼)	5060-2½	911 (1000-2½)
C CIRCLING	5060-1¼	906 (1000-1¼)	5100-2¾ 946 (1000-2¾)	5100-3 946 (1000-3)
AZAJI FIX MINIMUMS				
S-8	4640-1	491 (500-1)	4640-1¾	491 (500-1¾)
C CIRCLING	4700-1 546 (600-1)	4780-1 626 (700-1)	5100-2¾ 946 (1000-2¾)	5100-3 946 (1000-3)

NW-1, 18 JUL 2019 to 15 AUG 2019

NW-1, 18 JUL 2019 to 15 AUG 2019