

# RAVNN SIX ARRIVAL (RNAV) Arrival Routes

POTOMAC APP CON

128.35 270.275

BALTIMORE WASHINGTON INTL ATIS

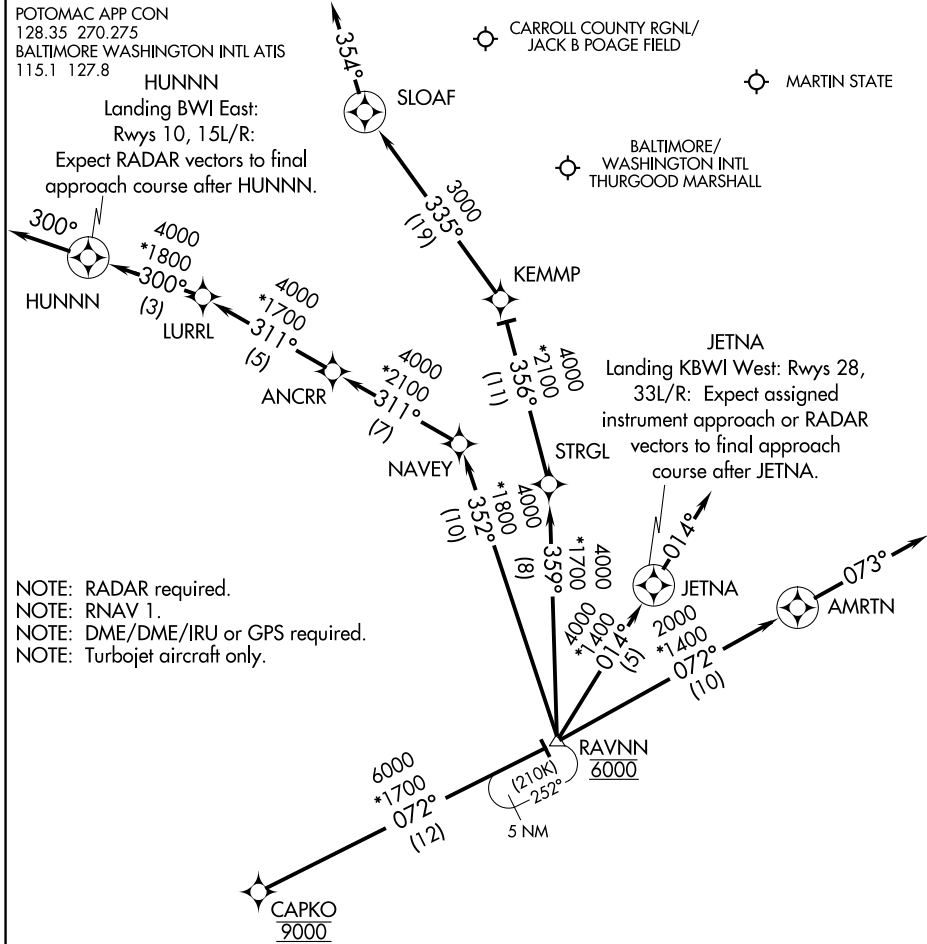
115.1 127.8

HUNNN

Landing BWI East:

Rwys 10, 15L/R:

Expect RADAR vectors to final approach course after HUNNN.



NOTE: RADAR required.  
 NOTE: RNAV 1.  
 NOTE: DME/DME/IRU or GPS required.  
 NOTE: Turbopjet aircraft only.

NOTE: Chart not to scale.

## ARRIVAL ROUTE DESCRIPTION

From CAPKO on track 072° to cross RAVNN at 6000.

**LANDING BWI RUNWAYS 10, 15L/R:** From RAVNN on track 352° to NAVY, then on track 311° to ANCR, then on track 311° to LURRL, then on track 300° to HUNNN, then on track 300°.  
Expect RADAR vectors to final approach course.

**LANDING BWI RUNWAYS 28, 33L/R:** From RAVNN on track 014° to JETNA, then on track 014°.  
Expect assigned instrument approach or RADAR vectors to final approach course.

**LANDING DMW:** From CAPKO on track 072° to cross RAVNN at 6000, then on track 359° to STRGL, then on track 356° to KEMMP, then on track 335° to SLOAF, then on heading 354°.  
Expect RADAR vectors to final approach course.

**LANDING MTN:** From CAPKO on track 072° to cross RAVNN at 6000, then on track 072° to AMRTN, then on track 073°. Expect RADAR vectors to final approach course.

NE-3, 18 JUL 2019 to 15 AUG 2019

NE-3, 18 JUL 2019 to 15 AUG 2019