

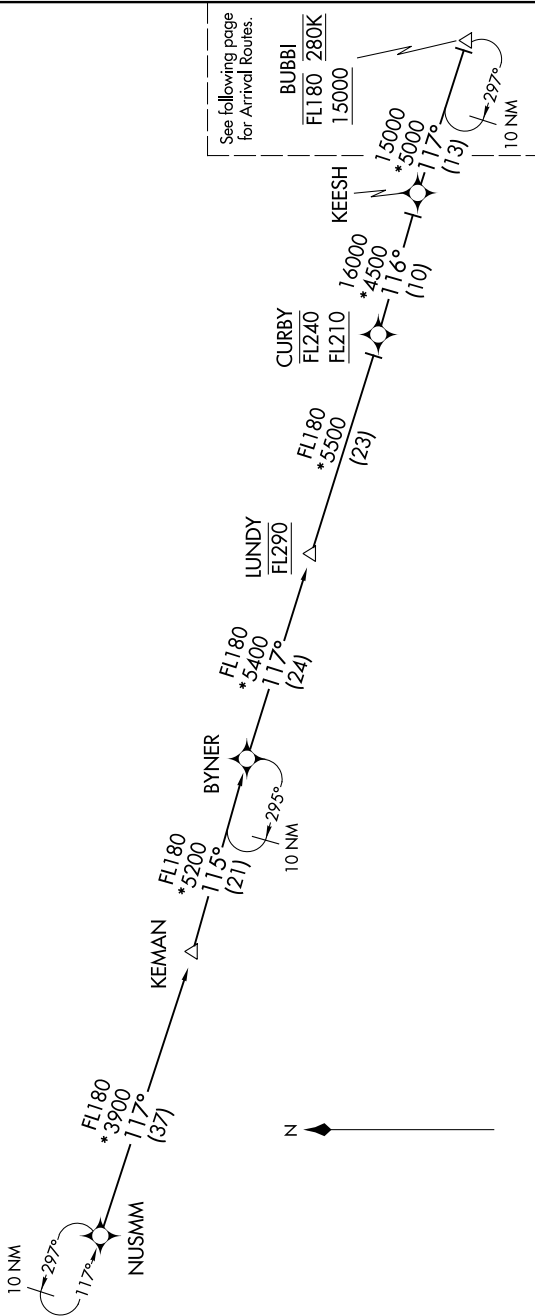
ANTHM THREE ARRIVAL (RNAV) Transition Routes

BALTIMORE, MARYLAND

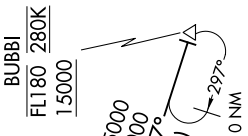
NE-3, 18 JUL 2019 to 15 AUG 2019

BALTIMORE D-ATIS  
115.1  
POTOMAC APP CON  
133.85 254.25

- NOTE: RADAR required
- NOTE: RNAV 1.
- NOTE: DME/DME/IRU or GPS required.
- NOTE: Turbojet aircraft only.
- NOTE: Prohibited area (P56) 1.5 NM north of DCA avoid surface to 18000 MSL.
- NOTE: ARTCC will issue landing direction assignment (east or west). Potomac TRACON will issue runway assignments.



See following page for Arrival Routes.



KEESH TRANSITION (KEESH.ANTHM3)  
 KEMAN TRANSITION (KEMAN.ANTHM3)  
 NUSMM TRANSITION (NUSMM.ANTHM3)

(CONTINUED ON FOLLOWING PAGES)

NOTE: Chart not to scale.

NE-3, 18 JUL 2019 to 15 AUG 2019

ANTHM THREE ARRIVAL (RNAV) Transition Routes

BALTIMORE, MARYLAND