

VORTAC SJU 114.0 Chan 87	APP CRS 082°	Rwy Idg TDZE Apt Elev 8016 10
--	------------------------	---

VOR or TACAN RWY 10

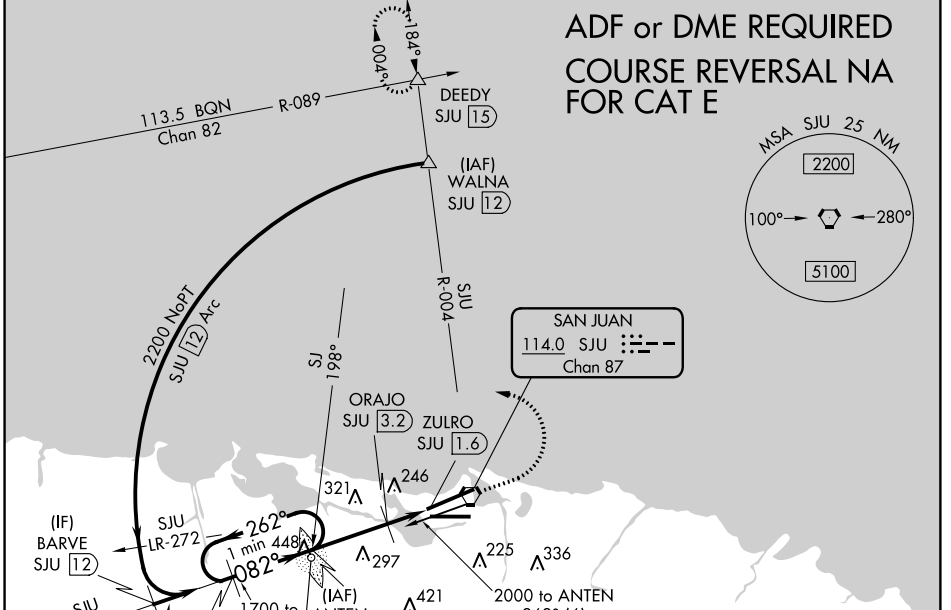
LUIS MUNOZ MARIN INTL (SJU)(TJSJ)

▼ When VGSI inop, Straight-in/Circling Rwy 10 procedure NA at night. Circling NA for Cat E south of Rwy 10-28. Inop table does not apply to S-10 Cats A, B and ORAJO fix minimums S-10 Cats A, B. For inop MALSR, increase S-10 Cats C, D, E visibility to 1¾, increase ORAJO fix minimums S-10 Cats C, D, E visibility to 1¾. Rwy 10 helicopter visibility reduction below 1 SM NA.

MALSR
AS

MISSED APPROACH: Climb to 2000 then climbing left turn to 3000 on heading 320° and SJU VORTAC R-004 to DEEDY INT/15 DME and hold.

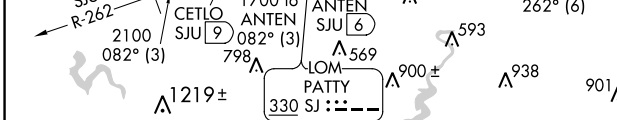
D-ATIS 125.8	SAN JUAN APP CON 119.4 269.2 (WEST & SW) 120.9 290.2 (NORTH & EAST)	SAN JUAN TOWER 132.05 257.8	GND CON 121.9 348.6	CLNC DEL 126.4 284.6	CPDLC
------------------------	---	---------------------------------------	-------------------------------	--------------------------------	-------



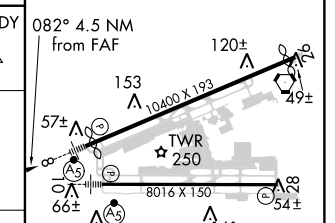
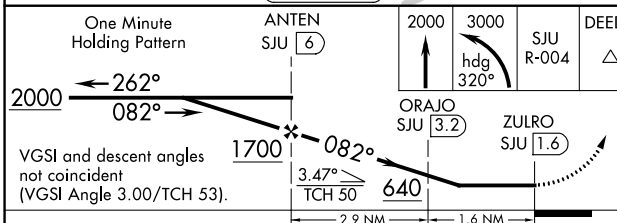
ADF or DME REQUIRED
COURSE REVERSAL NA
FOR CAT E

SE-3: 18 JUL 2019 to 15 AUG 2019

SE-3: 18 JUL 2019 to 15 AUG 2019



ELEV 10	D	TDZE 10
---------	----------	---------



CATEGORY	A	B	C	D	E
S-10	640-1	630 (700-1)	640-1¾ 630 (700-1¾)		
CIRCLING	640-1	630 (700-1)	640-1¾ 630 (700-1¾)	640-2 630 (700-2)	640-2¼ 630 (700-2¼)
ORAJO FIX MINIMUMS (DME REQUIRED)					
S-10	500-1 490 (500-1)				
CIRCLING	600-1	590 (600-1)	600-1½ 590 (600-1½)	600-2 590 (600-2)	640-2¼ 590 (600-2¼)

REIL Rwy 26
HIRL Rws 8-26 and 10-28

FAF to MAP 4.5 NM

Knots	60	90	120	150	180
Min:Seq	4:30	3:00	2:15	1:48	1:30