

(VERMO5.VERMO) 17285

# VERMO FIVE DEPARTURE

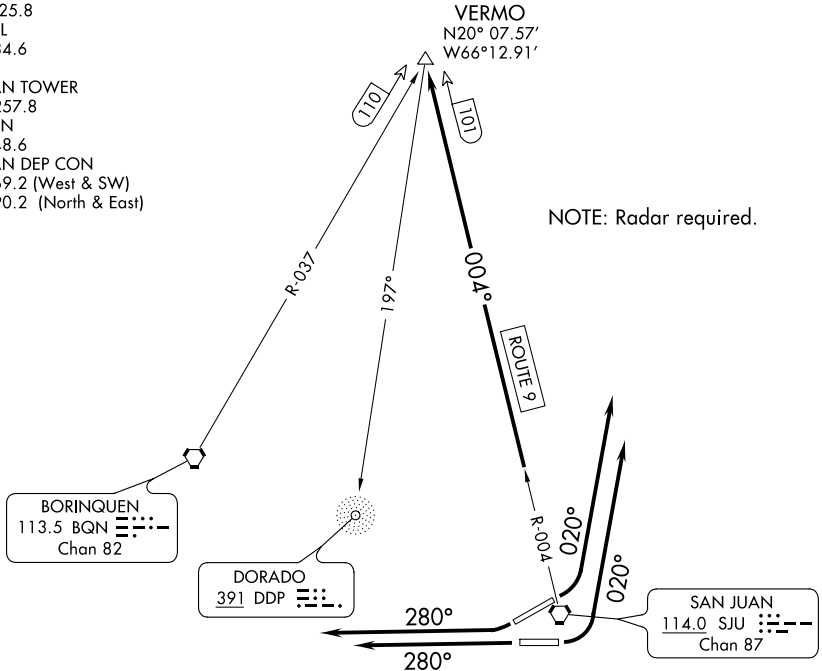
AL-784 (FAA)

LUIS MUNOZ MARIN INTL (SJU)(TJSJ)  
SAN JUAN, PUERTO RICO

D-ATIS 125.8  
CLNC DEL  
126.4 284.6  
CPDLC  
SAN JUAN TOWER  
132.05 257.8  
GND CON  
121.9 348.6  
SAN JUAN DEP CON  
119.4 269.2 (West & SW)  
120.9 290.2 (North & East)

VERMO  
N20° 07.57'  
W66° 12.91'

NOTE: Radar required.



TAKEOFF MINIMUMS  
Rwy 8, 10, 26, 28: Standard.

NOTE: Chart not to scale.

## DEPARTURE ROUTE DESCRIPTION

TAKEOFF RUNWAY 8: Climbing left turn heading 020° or as assigned by ATC, expect vectors to intercept SJU R-004 to VERMO INT. Thence. . . .

TAKEOFF RUNWAY 10: Climbing left turn heading 020° or as assigned by ATC, expect vectors to intercept SJU R-004 to VERMO INT. Thence. . . .

TAKEOFF RUNWAY 26: Climb heading 280° or as assigned by ATC, expect vectors to intercept SJU R-004 to VERMO INT. Thence. . . .

TAKE OFF RUNWAY 28: Climb heading 280° or as assigned by ATC, expect vectors to intercept SJU R-004 to VERMO INT. Thence. . . .

. . . . maintain 5000 unless assigned lower altitude. Expect clearance to FL280, or requested altitude if lower, ten minutes after departure.

VERMO FIVE DEPARTURE  
(VERMO5.VERMO) 06JAN94

SAN JUAN, PUERTO RICO  
LUIS MUNOZ MARIN INTL (SJU)(TJSJ)

SE-3, 18 JUL 2019 to 15 AUG 2019

SE-3, 18 JUL 2019 to 15 AUG 2019